



April 4, 2012 Gangs and Drugs Taskforce Meeting

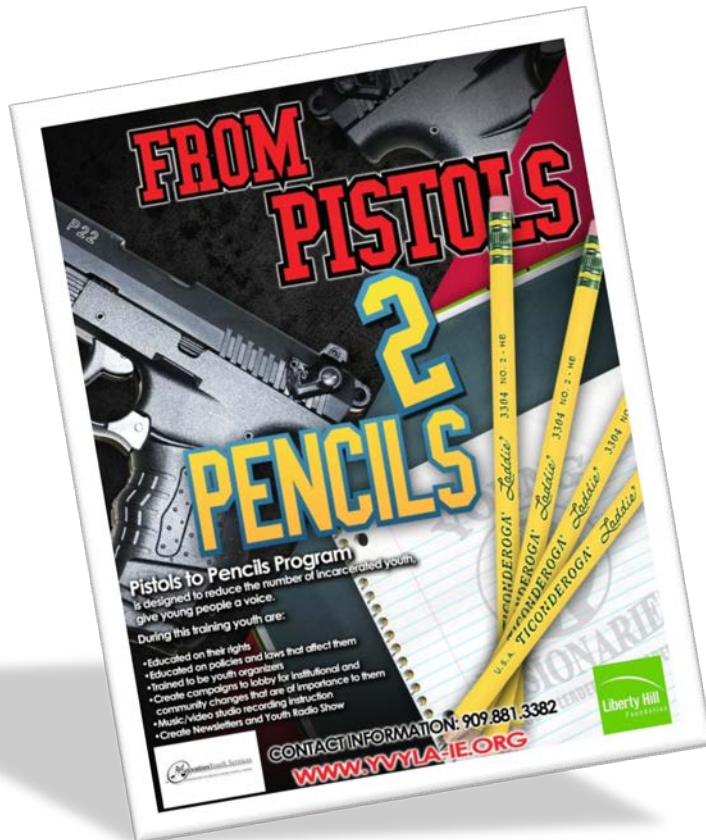
Presented By:

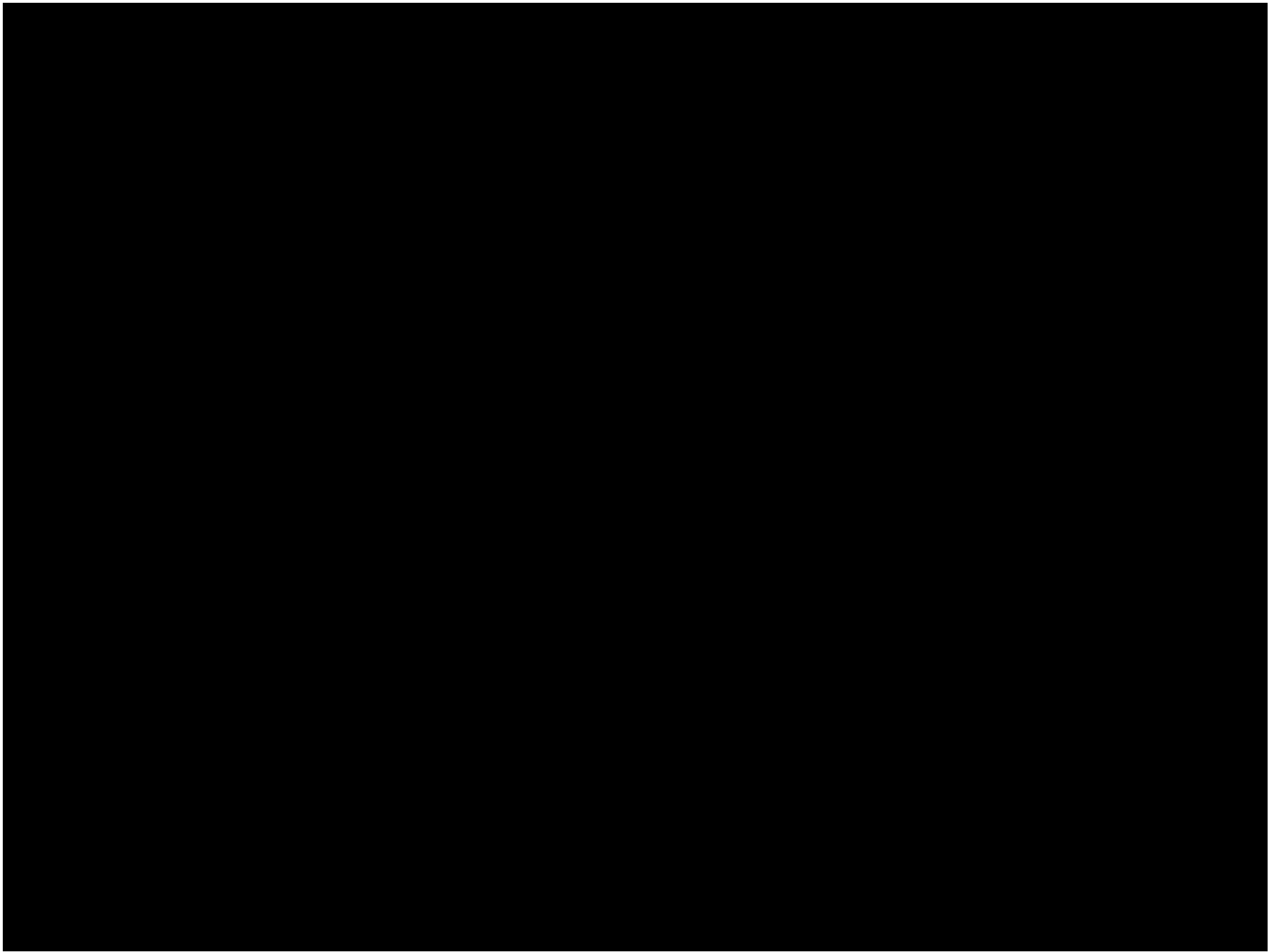
Terrance Stone, CEO

Heather Louer, Fund Development Director

# Mission

To enhance the lives of at-risk youth in the Inland Empire by providing quality emergency shelter and youth leadership development programs.





# Homeless Youth Population

- *Homelessness for Youth is becoming Epidemic:*
  - *2009 & 2011 Homeless Count found over 180 unsheltered homeless youth*
  - *San Bernardino County Superintendent of Schools 2010-2011 Homeless Student Count reports 27,616 homeless students*
- *Adult shelters do not allow unaccompanied minor's to stay in their shelters*

# Homeless Youth Shelters

- Visionary Homes is the **ONLY YOUTH** emergency shelter program in the City of San Bernardino.
- We represent **40%** of the **YOUTH** emergency shelter beds in the County.
  - **OUR HOUSE**, located in Redlands, also serves San Bernardino County homeless youth (**17 & younger**)
- **TAY Hostel** will serve transitional-aged youth (**TAY**) **18 & older**

# VISIONARY HOMES



**24 HOUR BASIC CENTER FOR YOUTH**  
**SAFE PLACE TO SLEEP~ EVERY DAY 24 HOURS A DAY**  
**17 AND UNDER**

**MONDAY - TUESDAY - THURSDAY**

**9:00AM-4:00PM**

- WALK IN, WASH CLOTHES, SHOWER
- HOT MEAL OR FOR EDUCATION
- COUNSELING SERVICES



**IF IN NEED OF A HELPING HAND**  
**CONTACT US (909) 486-3454 24 HOUR LINE**

**OR MEET US AT OUR PICK UP SAFE SPOT**  
**YOUNG VISIONARIES PRINT CENTER**  
**1331 WEST KENDALL DRIVE SUITE 2,**  
**SAN BERNARDINO, CA 92407**  
**MONDAY-FRIDAY 10:00AM-6:00PM**  
**WWW.YVYLA-IE.ORG**



# 24/7 Shelter Services

- Meals prepared by local Chefs and volunteers
- A safe bed
- Hot showers & hygiene kits
- Mental Health Assessment
- Case management referral and linkage to community providers
- YVYLA Leadership & Employment Development program enrollment
- Monitored computer and internet access

# How can youth access the shelter...

## ELIGIBILITY

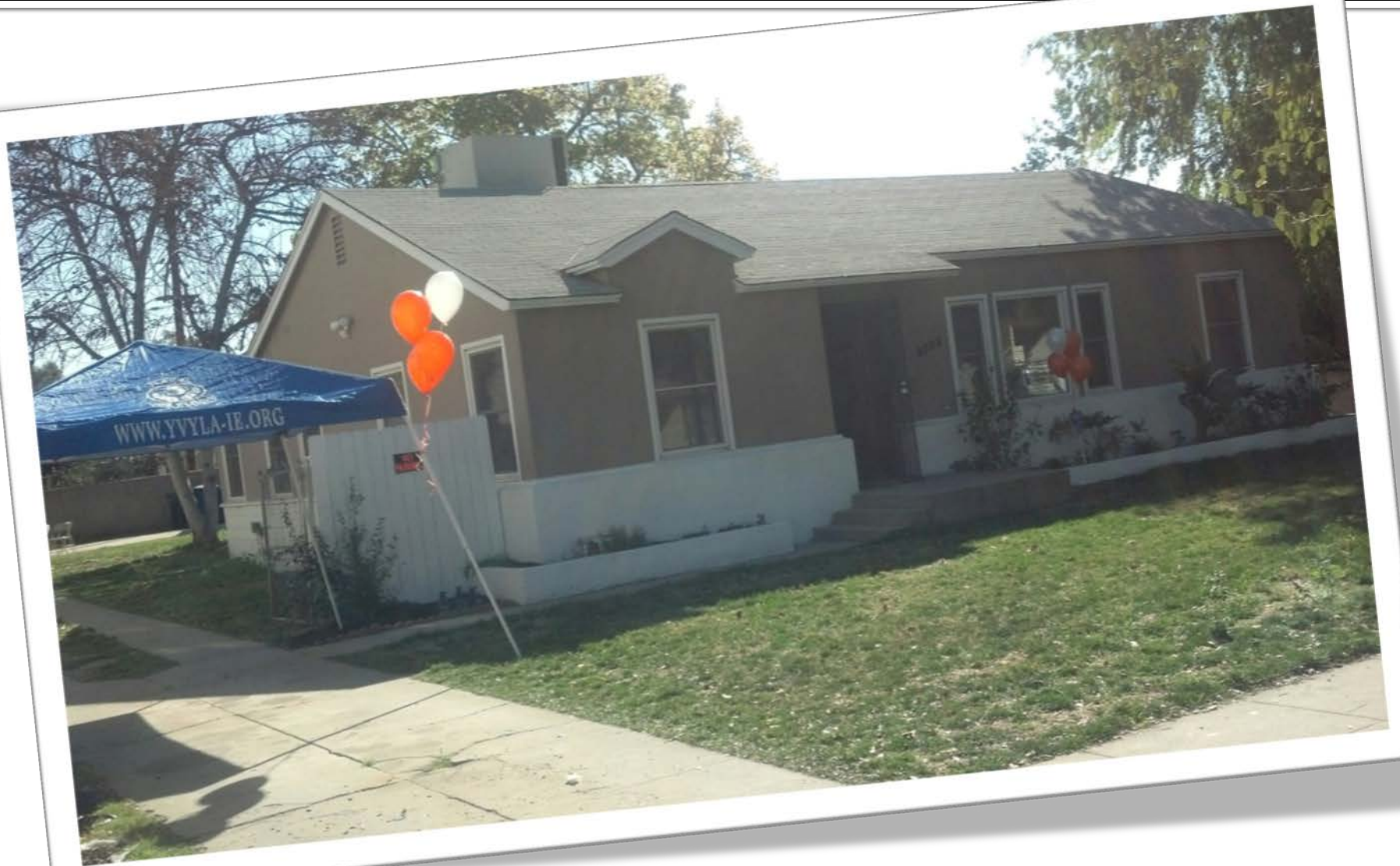
- 17 years old or younger
- Not ordered into probation placement
- Not in Foster Care

## REFERRAL

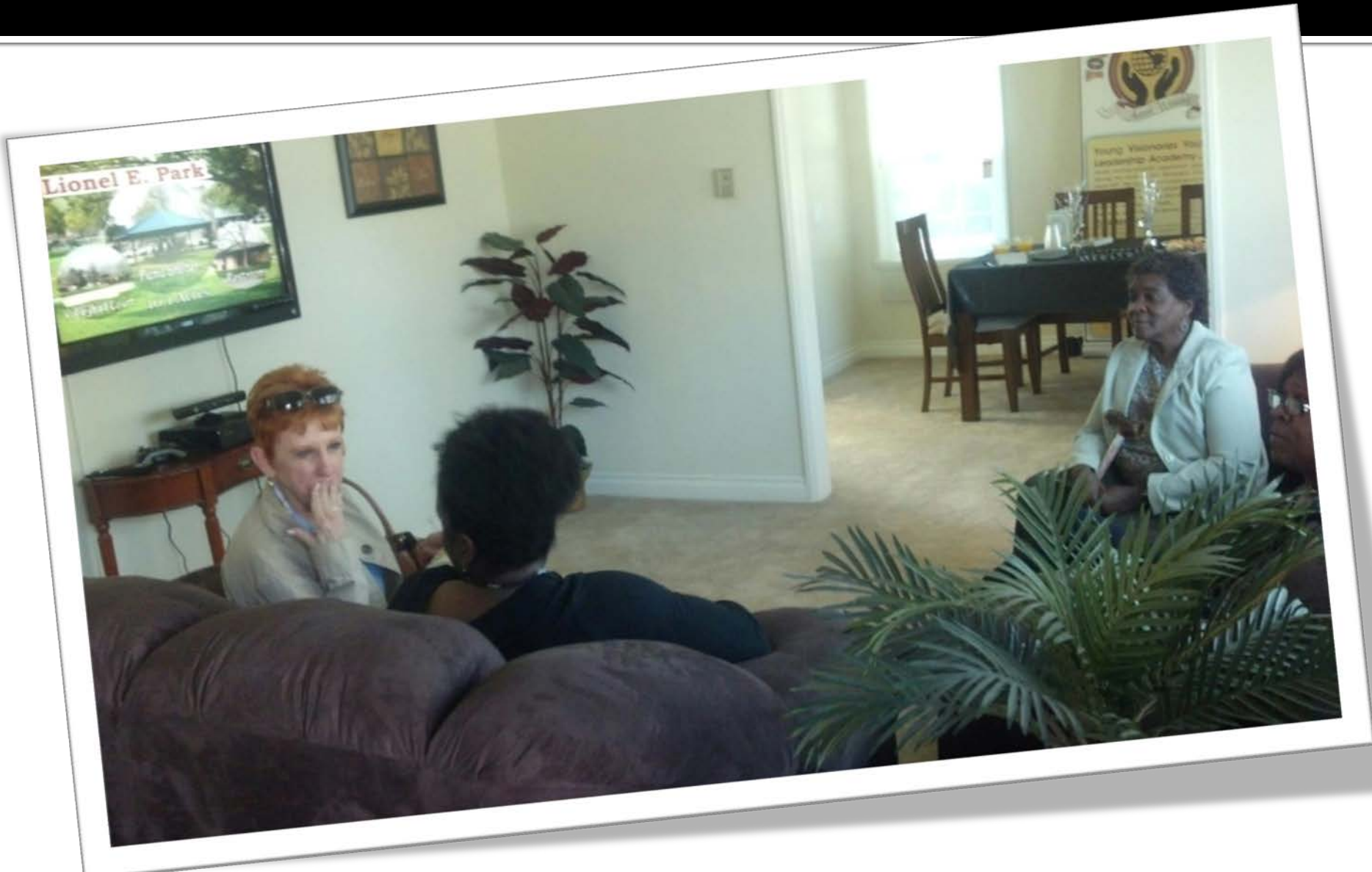
- Call the 24/7 Shelter Hotline @ (909)486-3654
- Email the Shelter @ [info@yvyla-ie.org](mailto:info@yvyla-ie.org)
- Drop in @ The Print Center  
1331 W. Kendall Drive, Suite 2 (located in the Baker's shopping center) Open  
10AM – 6 PM



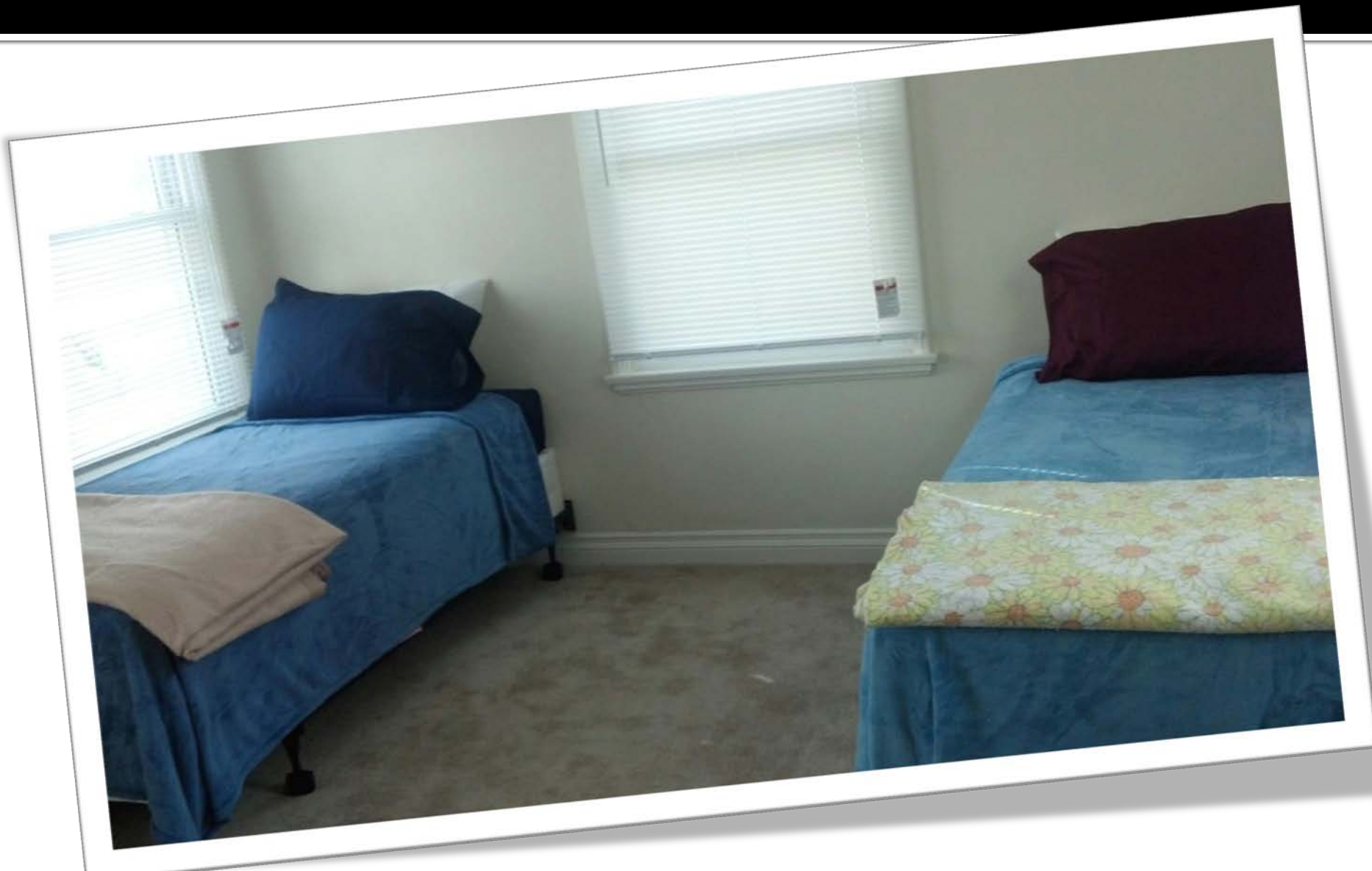
# Visionary Homes #1



# Living Room/ Common Area...



# Sleeping Quarters...4 Beds





# Beds made possible by 99.1 KGGI's morning D.J. Evelyn Erives...



# Local Guest Chef's...



# How to help...

## ■ VOLUNTEERS NEEDED

- Shelter Staff - 2 staff per shift minimum, shift times vary
- Licensed clinical staff to provide mental health assessments/case management assistance
- Tutors, Arts and Crafts Experts, Gardeners

## ■ DONATE

- Be A 555'er— donate \$50, \$500, or \$5000 in one year and receive special recognition via B.A.D. Newsletters, Website, and Facebook.

# Contact Us

[www.yvyla-ie.org](http://www.yvyla-ie.org)

**Shelter Hotline**

**(909) 486-3454**

**Any Questions?**