

# HOUSED PEOPLE ARE NOT HOMELESS



## RAPID RE-HOUSING RRRH

Rapid Re-Housing (RRH) **ends homelessness** for families and individuals.

### FIND LANDLORDS & APARTMENTS

Help people quickly find housing within one month or less.

### HELP PAY FOR HOUSING

Help people pay for housing short term; longer-term help an option.

### CONNECT TO JOBS & SERVICES

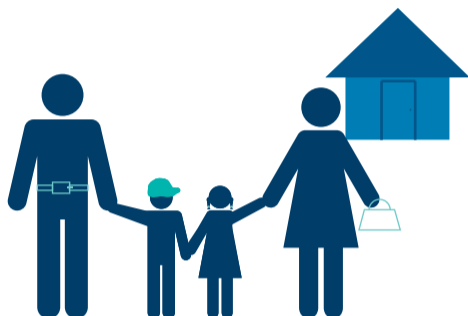
Help access services so people can stay in housing.

The **Core Components** of Rapid Re-Housing help people **find** housing fast, help **pay** for housing, and **connect** to jobs and services.

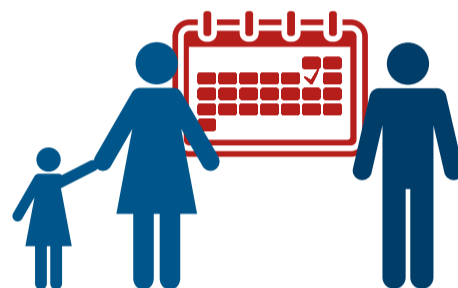
## FIND FAST HOUSING IDENTIFICATION



**Build** relationships with landlords to have access to as many housing units as possible.



**Find** and secure housing as quickly as possible after a person or family becomes homeless.



**Limit** the time a family or individual spends homeless. Move people into housing within **30 days or less**.

## HELP PAY RENT AND MOVE-IN ASSISTANCE



**Pay** for security deposits, move-in expenses...



... and/or rent and utilities.



Length of assistance varies, but often **4 to 6 months**.

## HELP CONNECT TO JOBS AND SERVICES

**Connect** families and individuals to services and supports in the community.

**Help** resolve issues that may threaten housing stability, including conflicts with landlords.



[www.rapidre-housing.org](http://www.rapidre-housing.org)

This document was produced by the National Alliance to End Homelessness with the support of the Melville Charitable Trust as part of an effort to increase the use of effective rapid re-housing practices nationwide. The National Alliance to End Homelessness is a leading national voice on the issue of homelessness that accomplishes its mission through research and education, policy analysis and advocacy, and capacity building. The Melville Charitable Trust is the largest foundation in the U.S. that is exclusively devoted to supporting solutions to prevent and end homelessness.