

SB 1383

Reducing short-lived pollutants in California

May 31, 2022

ADELA EVANS

Interim Division Chief

PATRICK KEITH

Interim Program Manager

DAVID ALANIZ

Program Manager





WHO WE ARE

- Department of Public Health, Division of Environmental Health Services (EHS)

SB 1383 BACKGROUND AND CONTEXT

- Policy based on science
- Six main elements
- Food waste and food insecurity
- Who is involved?

SOLUTIONS

- Waste reduction hierarchy

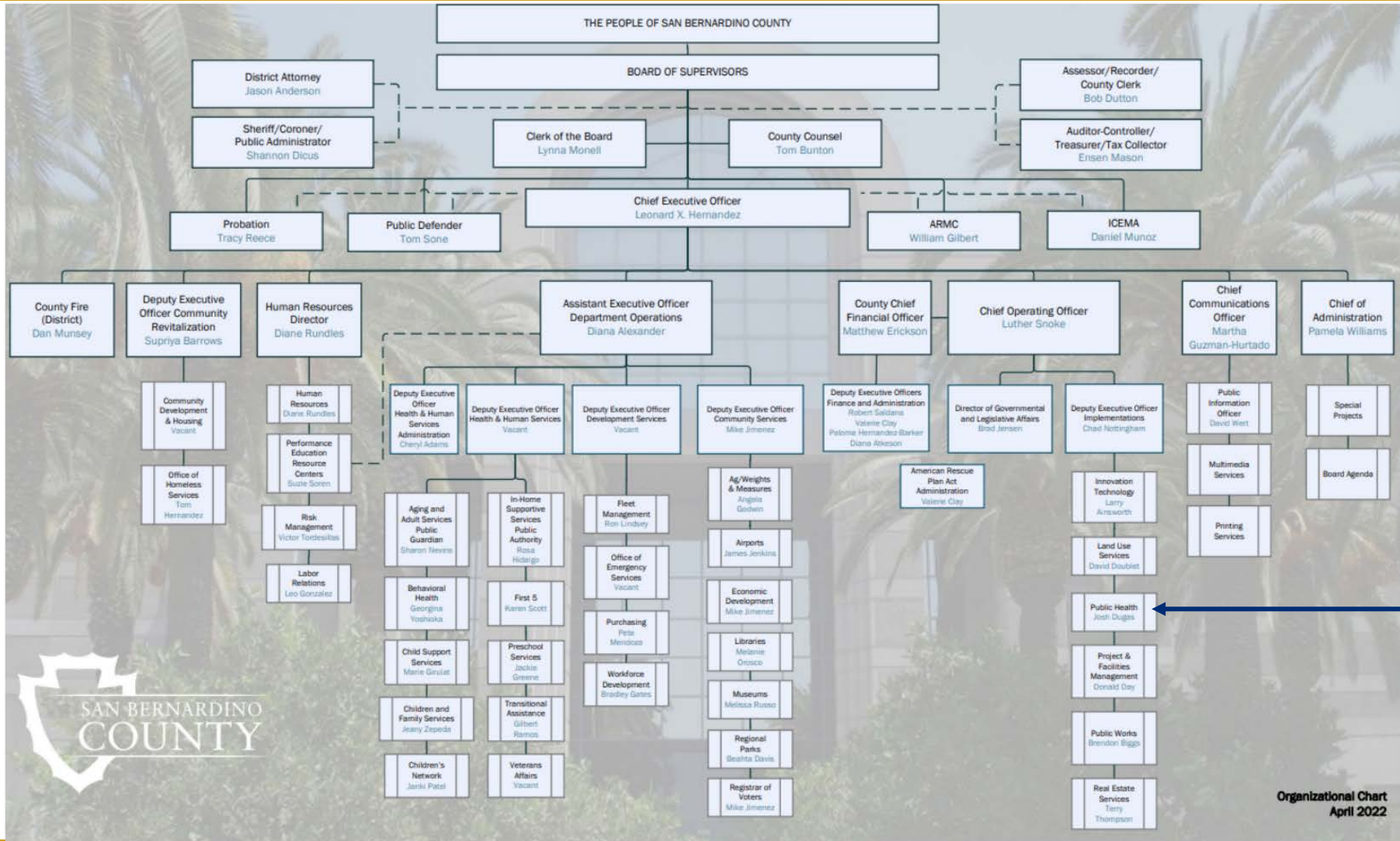
EDIBLE FOOD RECOVERY

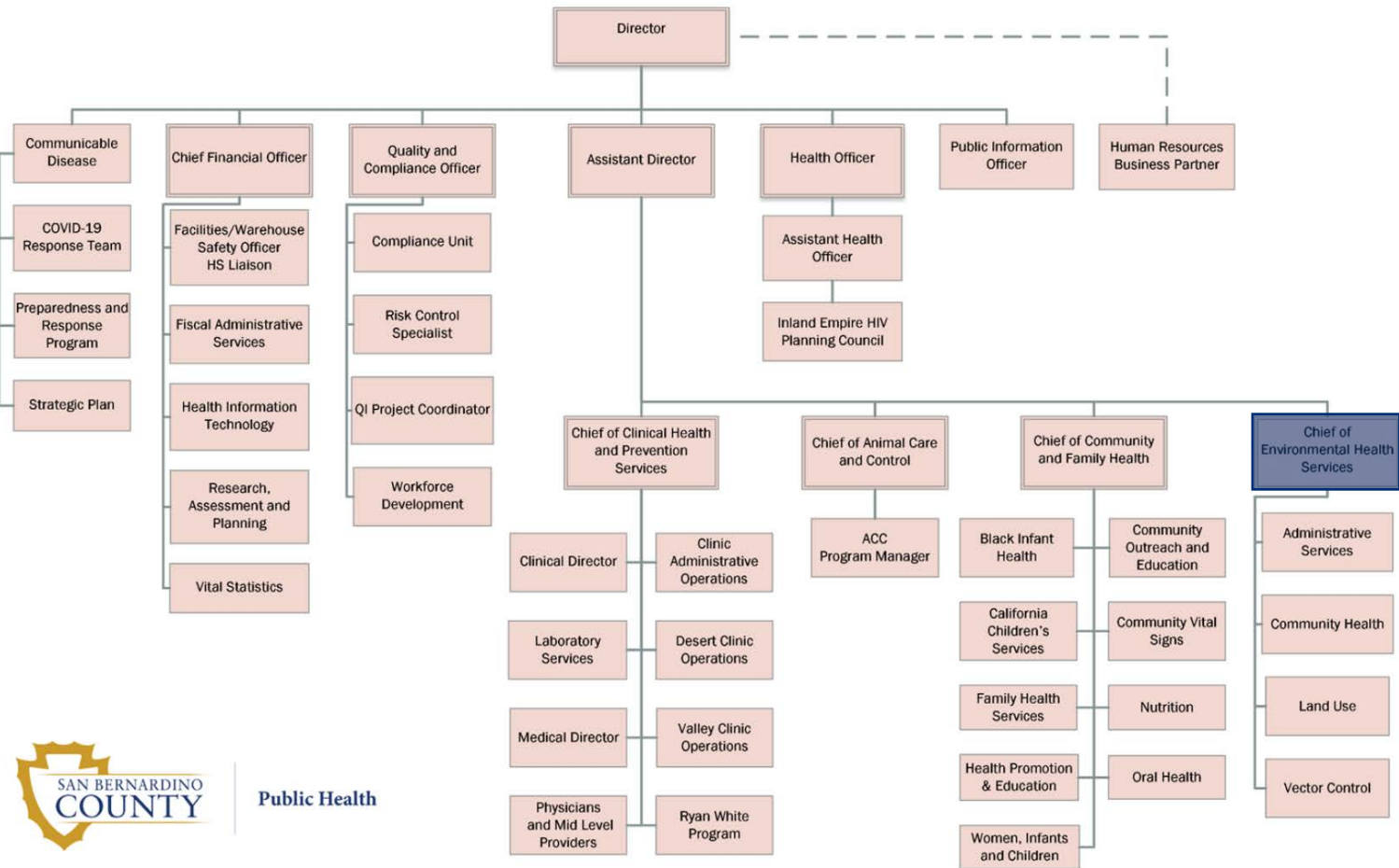
- Commercial Edible Food Generators
- Jurisdiction requirements

ORGANIC WASTE DIVERSION

WORKING TOGETHER

- Timeline
- Next steps?
- How can EHS help?





EHS works to:

- Prevent epidemics and the spread of disease
- Protect against environmental hazards
- Prevent injuries
- Promote and encourage healthy behaviors
- Respond to disasters and assist communities in recovery
- Assure the quality and accessibility of health services throughout the county

Food + Pools + Housing + Body Art + Water + Wastewater + Solid Waste(LEA) + Medical Waste + Land Use + Vector Control

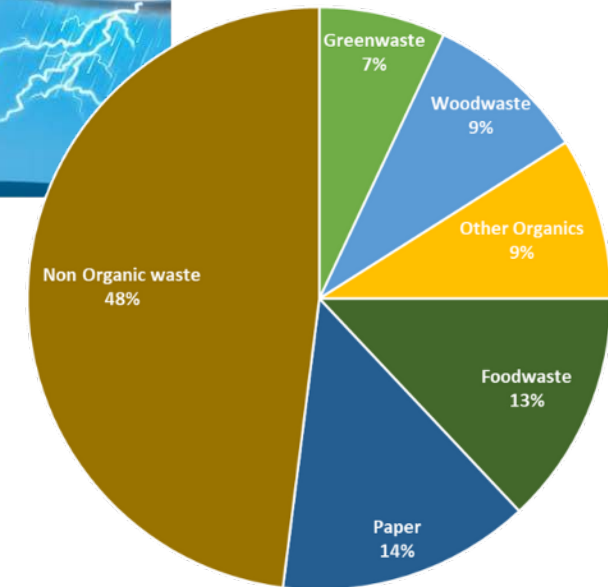
SHORT-LIVED CLIMATE POLLUTANTS (SLCP)

SLCPs are contaminants in the air that have the potential to produce harmful effects on people, ecosystems and agriculture. Reducing the methane emissions of SLCPs can significantly help reduce these effects. This bill aims to reduce organic waste disposal by 75 percent and increase edible food recovery by 20 percent by January 2025.



THE SIX MAIN ELEMENTS OF SB 1383

1. Education and Outreach
2. Capacity Planning
3. Edible Food Recovery
4. Organics and Recycling
5. Procurement
6. Contamination Monitoring

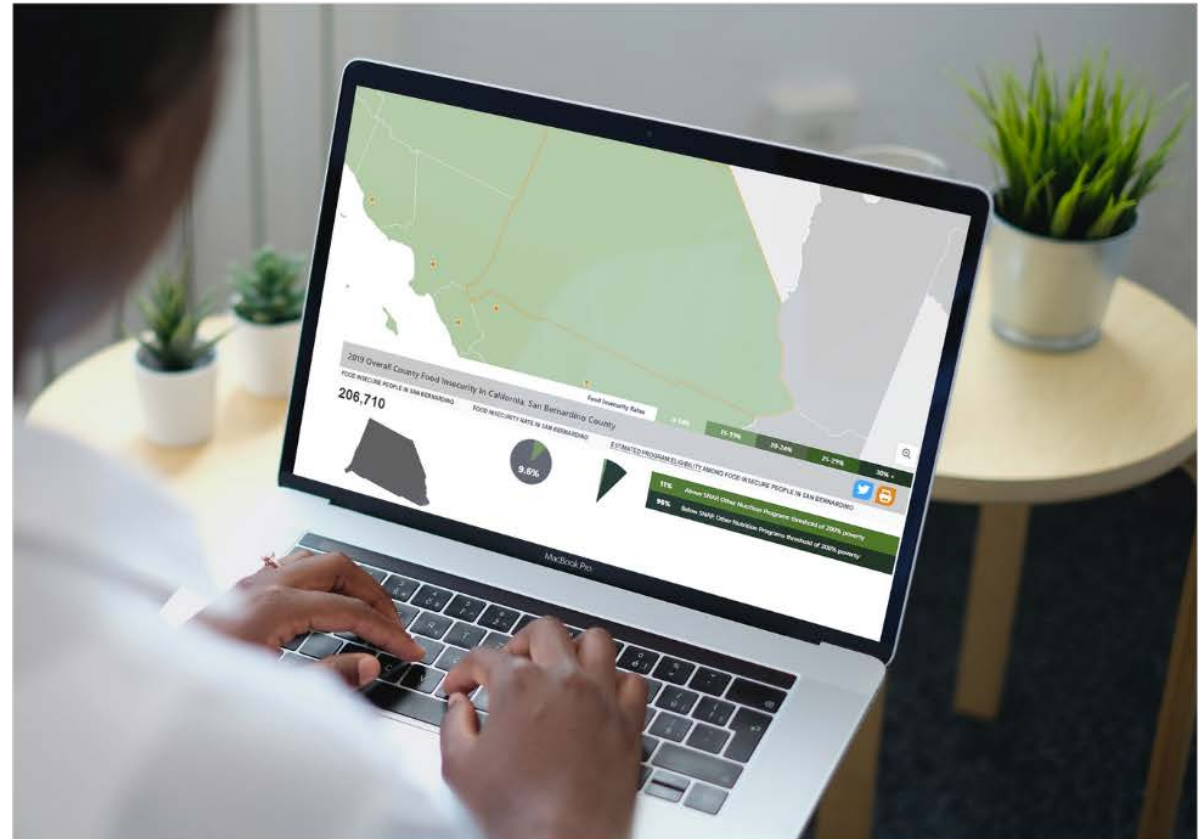


FOOD WASTE AND FOOD INSECURITY

Food insecurity is defined as a lack of consistent access to enough food for every person in a household to live an active, healthy life. According to the USDA, more than 38 million people, including 12 million children, experience food insecurity in the United States.

DID YOU KNOW....

- **1 in 5** Californians are Food Insecure
- California Throws Away More **than 6 Million** Tons of Food Waste Every Year
- California Disposed of approximately **24 million tons** of organic waste in 2018
- **190,435 tons** of food waste is generated by businesses in San Bernardino County
- **206,710 residents** of San Bernardino County are food insecure

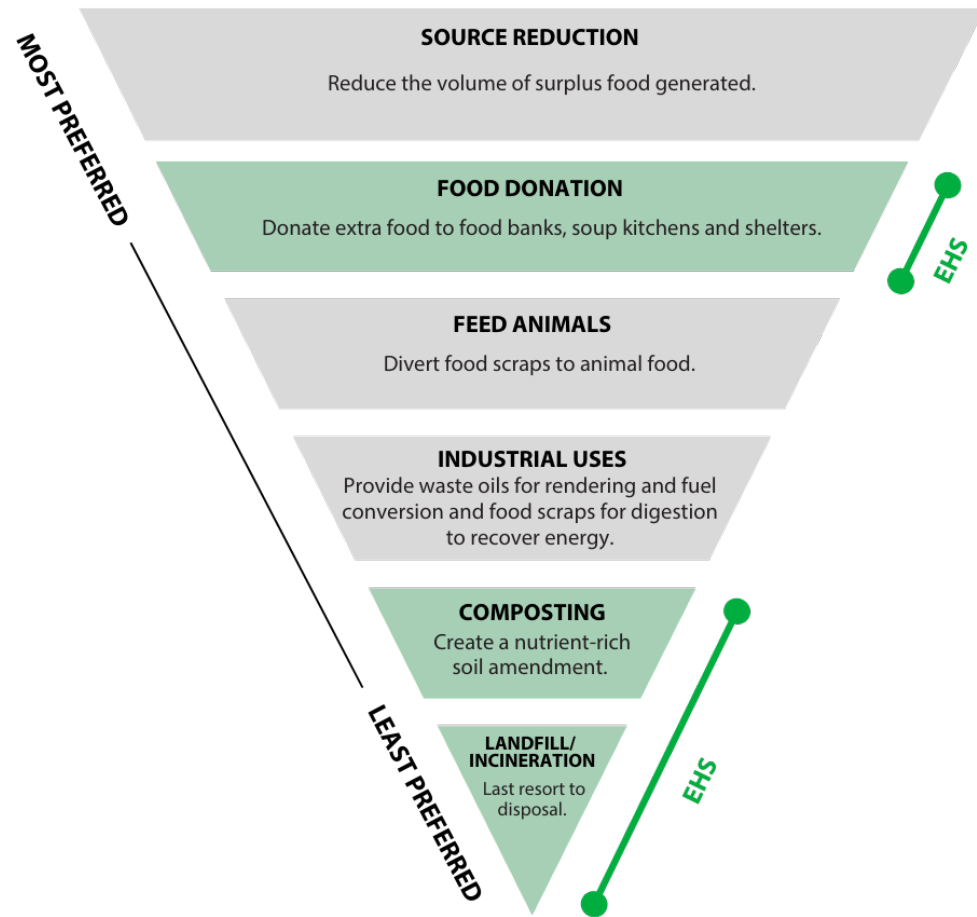


WHO IS INVOLVED?

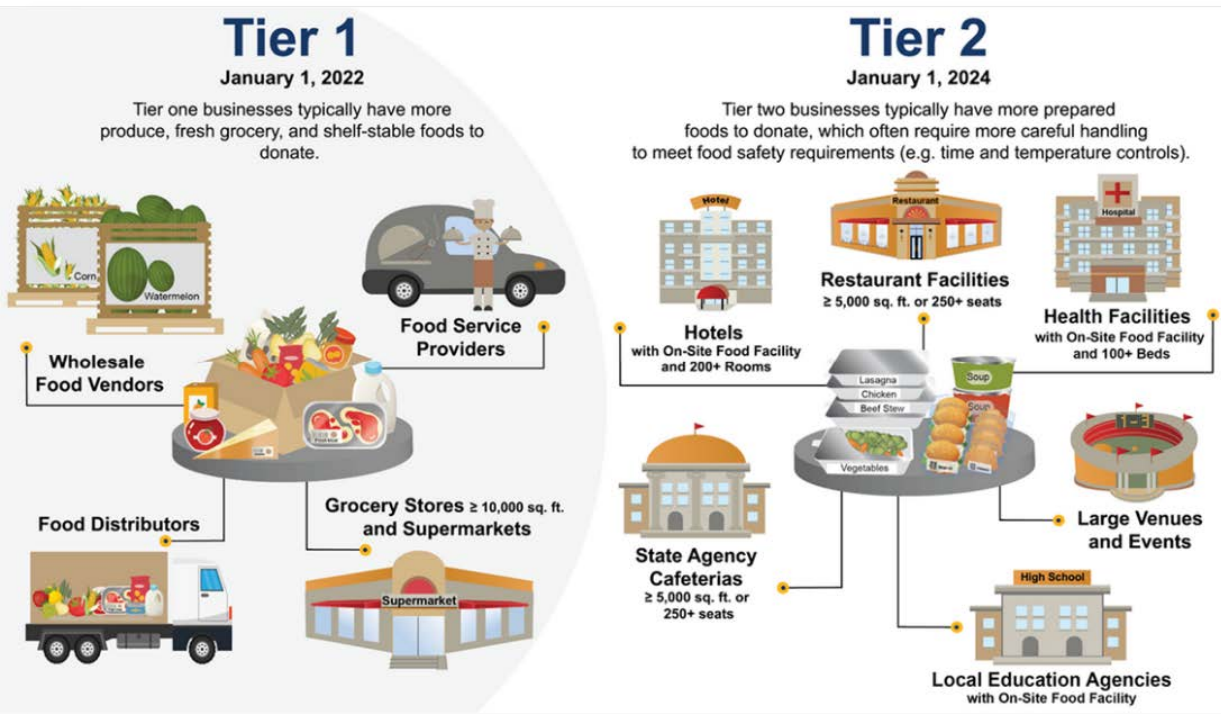
Every local department plays a role in SB 1383 implementation.



WASTE REDUCTION HIERARCHY



TYPES OF COMMERCIAL GENERATORS OF EDIBLE FOOD



LOCAL TIER 1 GENERATOR EXAMPLES:

Grocery and Supermarkets: Stater Bros., Cardenas, Costco

Food Distributors: McLane Distribution, Community Action Partnership of San Bernardino County (CAPSBC)

Wholesale Food Vendors: Frito-Lay, Nongshim America

Food Service Providers: Compass USA, Sodexo

LOCAL TIER 2 GENERATOR EXAMPLES:

Restaurants: Cracker Barrel, Olive Garden

Hotels: Double Tree Hotel, Residence Inn by Marriott

Health Facilities: Loma Linda University Children's Hospital, San Antonio Regional

Large Venues: Fontana Speedway, Stater Bros Stadium

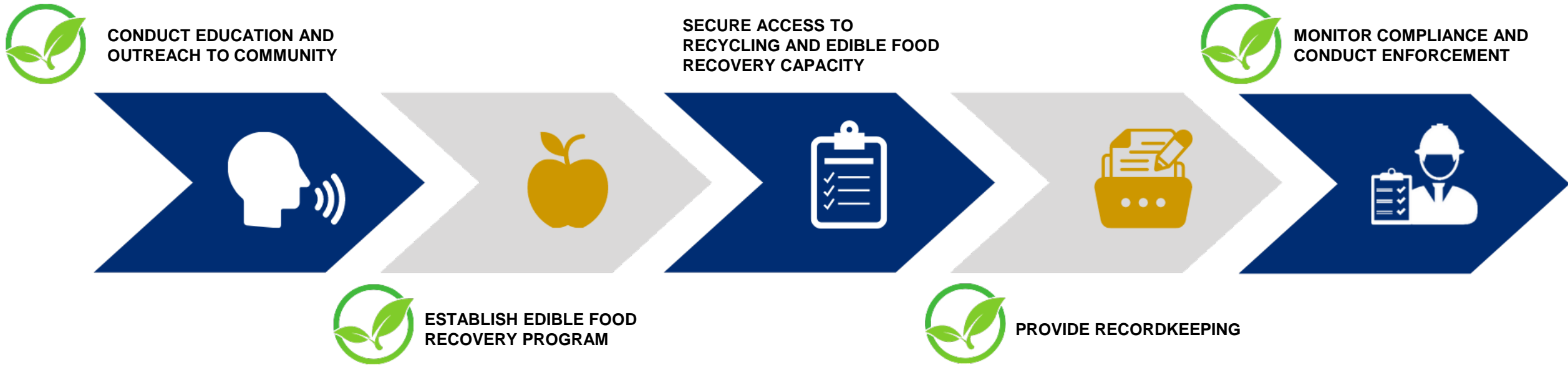
Large Events: NASCAR, Hard Summer, San Bernardino County Fair


Local Education Agencies: University of Redlands, California State University San Bernardino

REQUIREMENTS

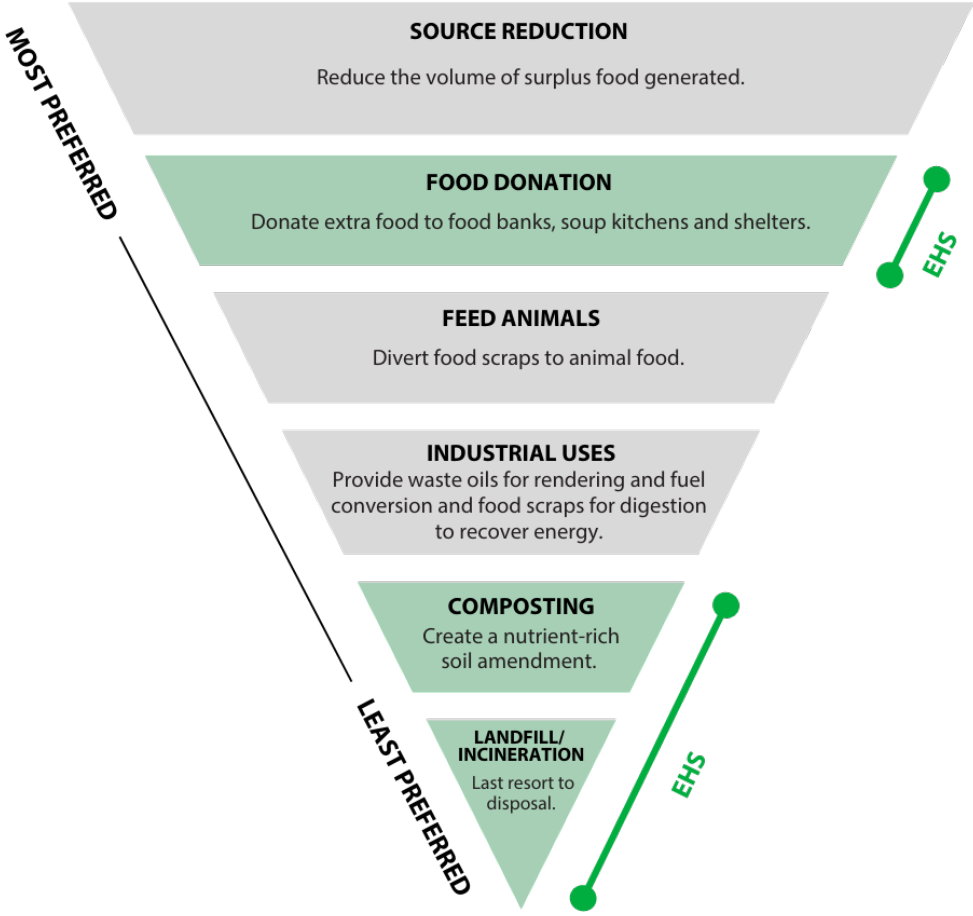
- Agreements for Food Recovery
- Food Safety Training
- Large Venue Food Recovery
- Recordkeeping

JURISDICTION REQUIREMENTS



 Services corresponding to EHS
NOTE: Written agreements are needed for EHS to assist with these tasks.

WASTE REDUCTION HIERARCHY RECAP

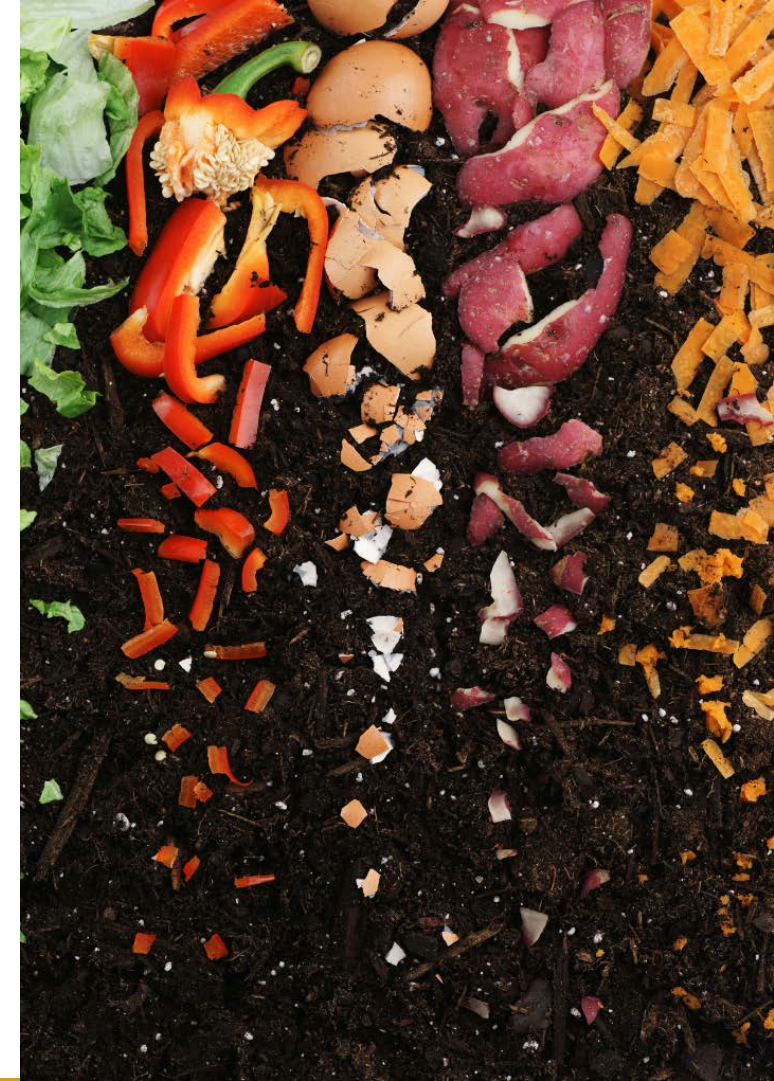


COMPOSTING OPERATIONS/FACILITIES

The **Local Enforcement Agency (LEA)**, a program within EHS, is certified by the California Department of Resources, Recycling and Recovery (CalRecycle) to enforce state laws and regulations at solid waste sites within San Bernardino County.


- Solid waste facilities/operations
- Composting operations facilities
- Transfer stations
- Sanitary landfills
- In-vessel digestion
- Engineered Municipal Solid Waste conversion

LEA can assist cities in permitting new facilities and keep facilities in compliance of SB 1383 regulations.



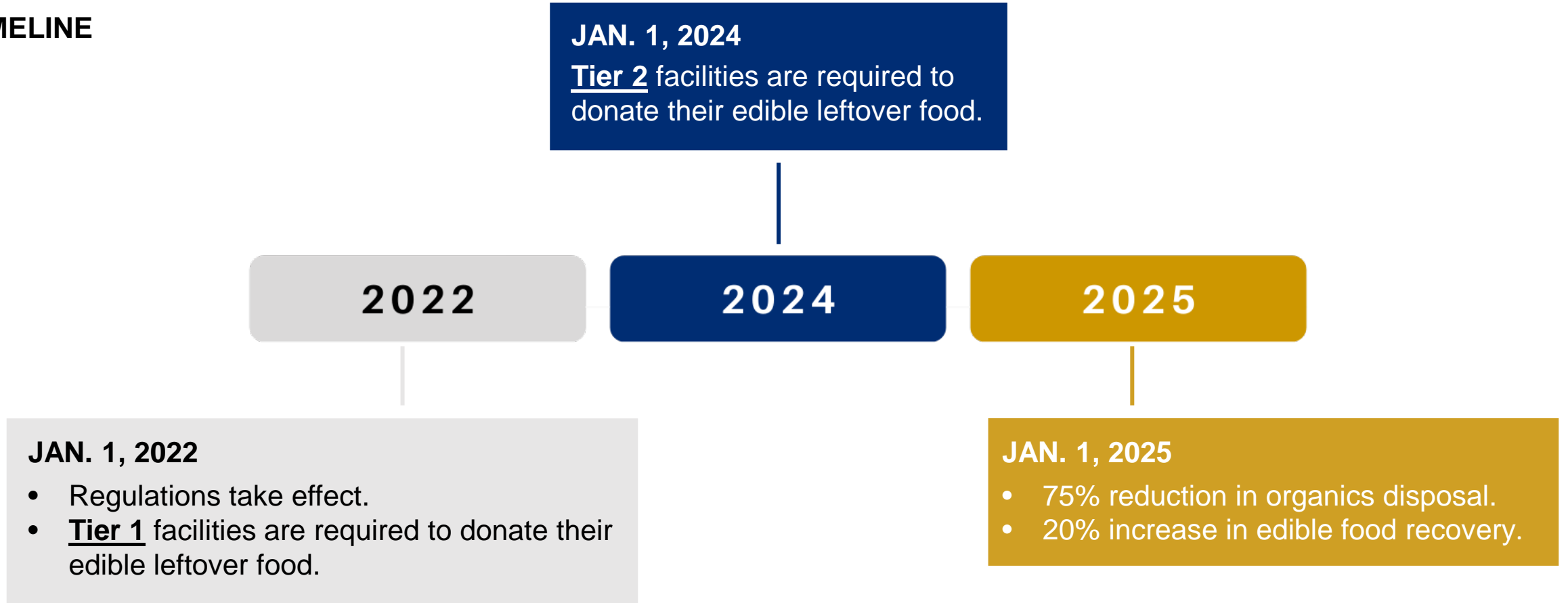
JURISDICTION REQUIREMENTS



 Services corresponding to EHS
NOTE: Written agreements are needed for EHS to assist with these tasks.

*** Please contact Solid Waste Management Department**

TIMELINE



NEXT STEPS...

Identify your edible food generators and charitable feeding organizations

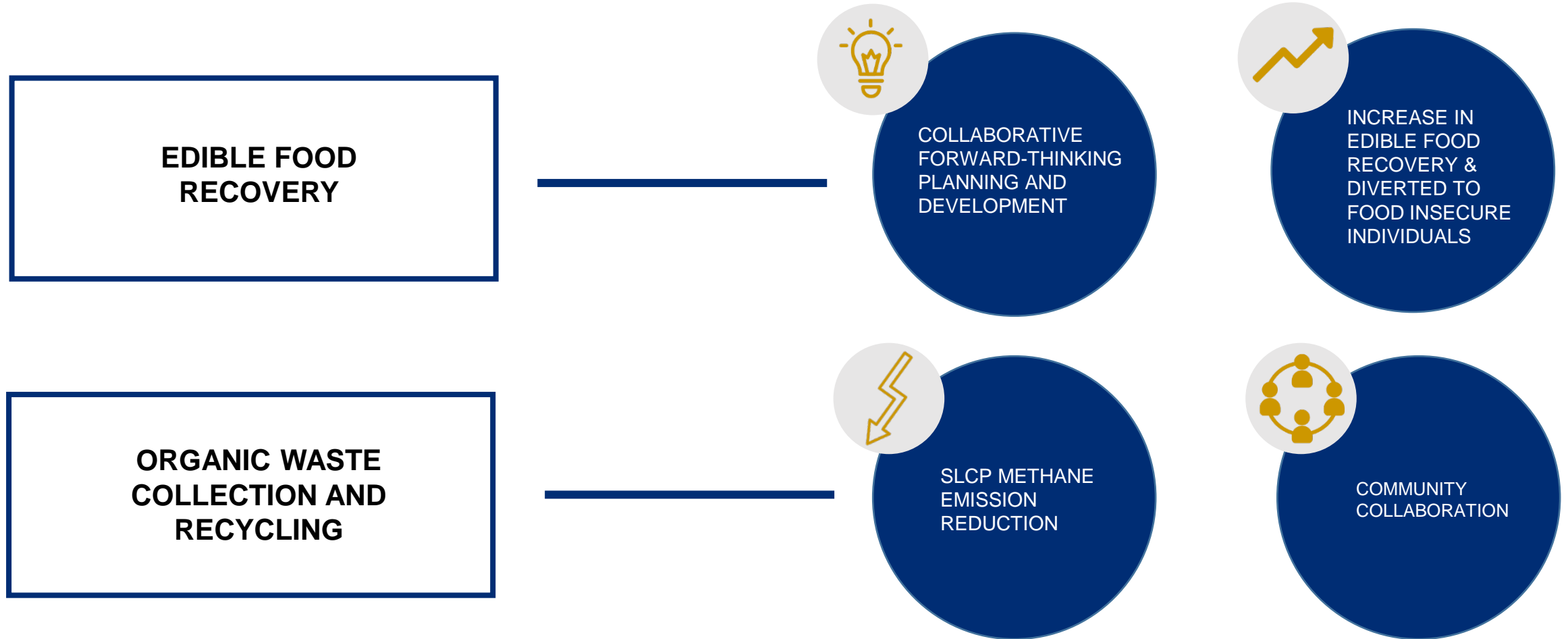
Outreach

Establish an Edible Food Recovery program

Assess capacity & keep records

Monitor & enforce (if applicable)

HOW CAN EHS HELP YOUR CITY MEET THE REQUIREMENTS OF SB 1383?





ADELA EVANS
Interim Division Chief
Adela.Evans@dph.sbcounty.gov



PATRICK KEITH
Interim Program Manager
Patrick.Keith@dph.sbcounty.gov



DAVID ALANIZ
Program Manager
David.Alaniz@dph.sbcounty.gov

FOR MORE INFORMATION ABOUT OUR PROGRAMS, MOUs OR AGREEMENTS, PLEASE CONTACT EHS **(800) 442-2283**.

Solid Waste Management/ Department of Public Works

Email: Ariella.Lewis@dpw.sbcounty.gov

Phone: (909) 387-8762

Website: dpw.sbcounty.gov/solid-waste-management/



Scan the QR code for a quick survey.