

SAN BERNARDINO COUNTY SHERIFF'S DEPARTMENT

Annual Report

DEDICATED TO YOUR SAFETY



Inspiring The Next Generation



Mission Statement



*“To provide
professional public safety services
to residents and visitors
of San Bernardino County
so they can be safe and secure
in their homes and businesses.”*





A Word From Gary Penrod

The cover of this year's annual report is dedicated to our future, the children. It depicts Deputy Mike Parham inspiring children as he shows them a MDC screen in a patrol car. Mike is an inspiration to us all, as he has returned to full duty after recovering from a near fatal gun battle in the streets of San Bernardino.

While I look forward to beginning my twelfth year as the Sheriff of this great county, I would like to take a moment to reflect on this past year.

January marked a new era for our Department when we merged with the Coroner's Office. The Board of Supervisors dissolved the elected Coroner's position and made my current position, Sheriff-Coroner. The 35 men and women assigned to the Coroner's Office are now members of our organization.

We formed two gang units this year, one which serves the High Desert and one serving the Valley Region. The units have been tasked with eradicating gang members. Our message is simple, but clear: "Reform, get out of our county, or you will go to jail."

The Board of Supervisors approved the purchase of six new helicopters. Three of these helicopters were delivered in July. The new Eurocopter AS 350 B3 helicopters are outfitted with state of the art equipment that will assist us in fighting crime throughout the county.

Tragically, two of our deputies were killed in the line of duty while responding to calls for service. In June, Deputy Greg Garipey was killed in a fatal traffic accident while driving to assist another deputy in Yucca Valley. Greg was not only an outstanding deputy from the time he was hired in 2003, but he was a retired Marine who served our country for 20 years. Greg cared deeply about his family and the community he served. In October, Deputy Danny Lobo was killed in a fatal traffic accident while on motor patrol in the city of Rancho Cucamonga. Danny was a dedicated member of our Department for eleven years. Danny was quick-witted and had a great sense of humor, always displaying a positive outlook on life. We were devastated by the loss of our brothers. We will miss them; they will not be forgotten.

With the support of the Board of Supervisors, during the last calendar year, we were able to hire over 300 deputies and 250 general employees, helping to ensure the safety of our county. The addition of the newly hired personnel allowed us to make 200 Department-wide promotions.

In spite of the tragedies during this past year, the men and women of this Department continued to display a powerful dedication to the citizens of this county. I look forward to continuing to serve as the Sheriff-Coroner of this county. Together we will work even harder to ensure the safety of our citizens.

Gary Penrod



Executive Staff



The departure of long-time Undersheriff Robert Pepler in October of 2005 marked a new beginning for the Executive Staff and for our entire organization.

Undersheriff Pepler has been a much admired figure in the Sheriff's Department ever since he was voted Class President by his peers in the Basic Academy in 1978. He was appointed as a deputy later that year by the legendary Sheriff Frank Bland. A rapid ascent through the ranks included assignments in patrol, search and rescue, and homicide. By 1985, Bob was promoted to Sergeant and he promoted to Lieutenant in 1987. Only four years later, Sheriff Dick Williams promoted him to Captain. In 1995, newly elected Sheriff Gary Penrod promoted Bob to Deputy Chief. A year later he promoted to Assistant Sheriff and in 1997 he was appointed to Undersheriff. Bob left the Department in October of 2005 after he was appointed to Assistant Director, Department of Homeland Security, Office of Counter Narcotics Enforcement, in Washington D.C.

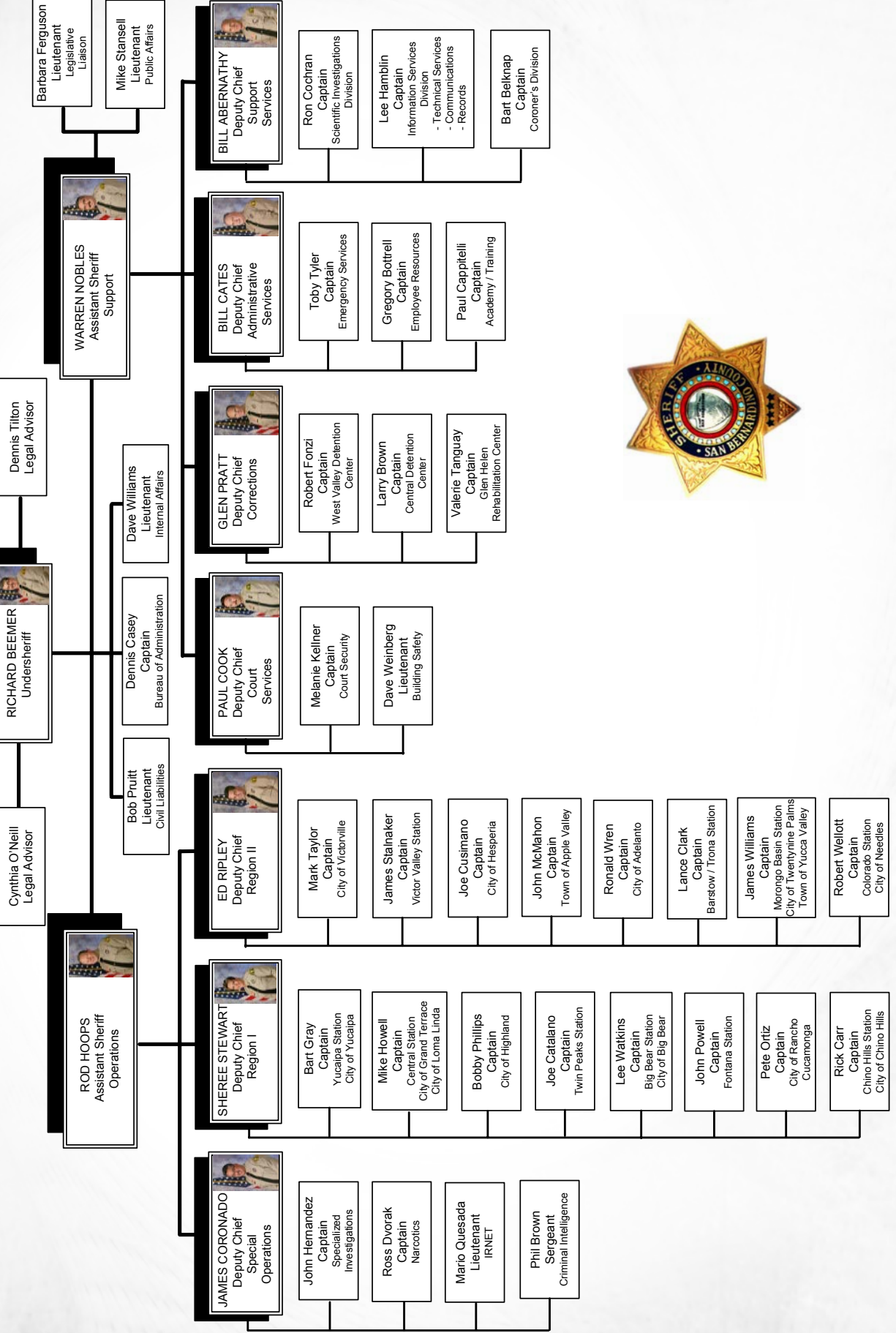
The retirement of Undersheriff Robert Pepler finalized the reorganization of the Executive Staff. In the past year, Sheriff Penrod has promoted eight members of the Department to the Executive Staff. They included the Undersheriff, two Assistant Sheriffs, and five Deputy Chiefs.

Newly appointed Undersheriff Rich Beemer is a 32 year member of the Department. He brings with him a distinguished record of success and accomplishment and he is a decorated Vietnam Veteran. As the number two man in the Department, Undersheriff Beemer will work personally with the Sheriff overseeing a staff of approximately 3,000 employees and managing a budget in excess of 360 million dollars.

The Office of the Sheriff includes Undersheriff Beemer, who is followed by two Assistant Sheriffs. Assistant Sheriff Warren Nobles oversees Support and Assistant Sheriff Rod Hoops oversees Operations.

Completing the Executive Staff are seven Deputy Chiefs: Deputy Chief Bill Abernathy (Support Services), Deputy Chief Bill Cates (Administrative Services), Deputy Chief Paul Cook (Court Services), Deputy Chief James Coronado (Special Operations), Deputy Chief Glen Pratt (Corrections), Deputy Chief Ed Ripley (Region II), and Deputy Chief Sheree Stewart (Region I).

Gary S. Penrod SHERIFF-CORONER





Sheriff's Stations

San Bernardino County is the largest county in the contiguous United States, encompassing over 20,186 square miles, with a population of over 1,950,550 citizens. Currently, the Sheriff provides law enforcement services to over 947,109 citizens and oversees 10 county stations and 14 contract stations.

In 1853, our first sheriff, Robert Clift, established Central Station, this county's first sheriff station. Since that time, nine additional county stations have been added to serve the citizens in the unincorporated areas. The **county stations** are:

Central Station	1853	Yucaipa	1947
Barstow/Trona	1890	Chino (West End)	1955
Morongo Basin	1890	Victor Valley	1973
Fontana	1941	Colorado River	1974
Big Bear	1945	Twin Peaks	1976

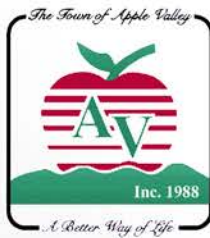


There are 24 cities within San Bernardino County. Fourteen of those cities currently contract with the San Bernardino Sheriff's Department for law enforcement services. In 1963, Victorville City became the first city in the county to contract with us. Since that time, 13 additional cities have followed suit and count on us to protect and serve their fine citizens. The **contract cities** are:

Victorville	1963	Hesperia	1988
Loma Linda	1971	Needles	1989
Rancho Cucamonga	1978	Apple Valley	1989
Grand Terrace	1979	Yucaipa	1990
Big Bear Lake	1981	Chino Hills	1992
Highland	1988	Yucca Valley	1992
Twentynine Palms	1988	Adelanto	2002



Contract Cities





Information Services

Information Services encompasses the Technical Services Division, the Records Division and the Communications Division. This vital part of the organization utilizes the latest developments in technology to ensure the swift and accurate exchange of information.

The **Technical Services Division** is responsible for all aspects of technology relating to the Sheriff's computer and automated systems. They provide support and maintenance to the Department's information systems. This year, the division completed the implementation of the Department's new Computer Aided Dispatch (CAD), and Message Switch System for a California Law Enforcement Telecommunication System (CLETS) connection to the Department of Justice, as well as an upgrade of the Records Management System (RMS). The new systems are supported, maintained and housed by the Sheriff's Department, removing the responsibility from the County Information Services Division. Staff members are responsible for continuing implementation of projects such as the Automated Reports System (ARS), Field Based Reporting (FBR), Fleet Maintenance (FM), and the Integrated Justice Data Link (JDL). The Technical Services Division continually strives to stay ahead of the ever-changing technology in today's world.

The **Records Division** maintains and distributes deputy reports and booking jackets within the county. Information gathered, recorded and distributed by the Sheriff's Department must be accurate, clear and comprehensive. This information is digitally managed and stored by our records personnel.

In addition to these duties, records personnel enter and update factual information into both county and state databases. Deciding when to release and when to withhold information requires constant interpretation of federal laws, state laws, Department Policy and guidelines.

New technology, which includes reader printers and LiveScan machines, makes it possible for the division to keep abreast of an ever-increasing work-load. The entry of active warrants into the Sheriff's Automated Warrant System (SAW) is an essential function of the division. The CAL-PHOTO statewide DMV photo-sharing database, the teletype unit, and a central imaging database have helped streamline the processing of requests from the public and law enforcement.





Information Services



The **Communications Division** is comprised of two dispatch centers: the Valley Control Center and the Desert Control Center. Each of the two centers serves as the primary 9-1-1 Public Safety Answering Point (PSAP) for its respective geographic location. Recently, the Computer Aided Dispatching system previously used was replaced by the Tiburon System. Another sound improvement was the addition of five new dispatch supervisor positions and the creation of the new Dispatcher III position.

The **Valley Control Center** (VCC) is Region I's primary communications center. VCC is located in Rialto, next to the county's Emergency Operations Center (EOC), Fire Dispatch Center (CONFIRE), and the 800 MHz Radio Division. VCC serves the unincorporated areas of Bloomington, Fontana, Lytle Creek, Mentone, Montclair, Mount Baldy, San Bernardino, Upland, Yucaipa, and the mountain communities surrounding the Twin Peaks Station. They also provide dispatching services for the incorporated cities of Big Bear, Chino Hills, Grand Terrace, Highland, Loma Linda, Rancho Cucamonga, and Yucaipa. In 2005, VCC handled approximately 594,000 calls.

The **Desert Control Center** (DCC) is Region II's primary 9-1-1 answering point. DCC is located at the Victor Valley Station. DCC provides dispatching services for county patrol operations in the Victor Valley, Barstow, Trona, Baker, Colorado River, and the Morongo Basin areas. It also serves the incorporated cities of 29 Palms, Adelanto, Apple Valley, Hesperia, Needles, Victorville and Yucca Valley. In 2005, DCC handled over 580,000 calls.



Court Services



One of the largest commands in the Department is the Court Services Division. There are 86 **Superior Courts** located in 12 facilities throughout the county. They serve the communities of Chino, Rancho Cucamonga, Fontana, San Bernardino, Redlands, Joshua Tree, Big Bear, Twin Peaks, Victorville, Barstow, and Needles. The division is responsible for the safe and timely movement of over 100,000 prisoners yearly within the court system. The division also ensures that nearly 200,000 legal documents are served and enforced each year.



Court Services is broken into three large organizational units. The **East Valley Region** is comprised of the County's Central Courthouse, the Juvenile Court facility, and the Redlands courthouse. The **West Valley Region** includes Rancho Cucamonga, Fontana, and Chino (there are 19 courts in the Foothill Law and Justice Center alone). The **Desert/Mountain Region** handles Barstow/Needles, Victorville/Twin Peaks/Big Bear, and Morongo. Each region has a **Court Services Civil Division** which performs clerical, technical, and all civil enforcement procedures. Approximately 140 employees in this division administer the largest security contract serviced by the Sheriff's Department.



Corrections

In 1960, the **Glen Helen Rehabilitation Center** opened and became the county's main facility for housing sentenced inmates. The **Central Detention Center** opened in 1971 and is currently utilized for housing federal inmates for the US Marshal's Service. The **West Valley Detention Center** opened in 1991 and is the largest and most modern of the facilities.

The Sheriff's Food Services Division – serves approximately 19,200 meals every day. That's about 7,477,825 meals a year. In addition, this division prepares food for Search and Rescue, Volunteer Forces, and the San Bernardino County Fire Department.

The Health Services Division is responsible for providing healthcare to over 6,000 inmates throughout the county. Services begin at booking and continue until the inmate is released from custody. Every year the inmate population we serve is getting older, sicker and more difficult to treat. The division works closely with the Departments of Behavioral Health and Public Health, as well as the Arrowhead Regional Medical Center.

The Transportation Detail deploys 12 buses, 13 vans, and 2 cars. These vehicles covered over 934,000 miles last year, transporting over 286,000 inmates, most of whom were making court appearances.

In January of 2006, we look forward to opening the **Adelanto Detention Center**. This will add a fourth jail to our Bureau of Corrections and it will be the first jail of its size, serving the high desert region.





Specialized Investigations

The **Specialized Investigations Division** is comprised of the following details:

- Gang Unit
- High Tech Crime
- Crimes Against Children
- Bombs /Arson
- Homicide
- Polygraph



In 2005 we formed the **Gang Unit**. It is comprised of two teams, one serving the High Desert Region and one serving the Valley Region. Assignments on the teams include: two sergeants, two corporals, eight deputies, two CHP officers, and one Probation Officer. These teams target high crime areas and conduct gang sweeps resulting in the identification and arrest of gang members.

The **High-Tech Crime Detail** examines electronic devices such as computers, cell phones, pagers and digital cameras that have been identified as evidence involved in criminal cases. This detail utilizes the latest technology to assist investigators with identity theft, online fraud, child pornography, homicide and acts of terrorism. The detail also enhances audio and video data for forensic purposes in the course of investigations and trials.

The **Crimes Against Children Unit** investigates injuries to children, sexual abuse of minors, child pornography and child sex rings. This division is comprised of a highly-motivated and trained staff who seek to save and vindicate the most helpless of victims.



The **Bomb/Arson Detail** works closely with the County Fire Marshal, fire department investigators, and terrorism officials from across the nation. Their primary duty is to investigate explosive devices.

The **Homicide Detail** is responsible for investigating all unexplained or suspicious deaths and officer-involved shootings within our jurisdiction.

The **Polygraph Detail** assists investigators throughout the county by providing technical support and equipment for criminal, administrative and background investigations.



Specialized Units



Specialized Units include:

- Aviation
- Public Affairs
- Narcotics / SWAT
- Mounted Enforcement Unit
- Major Accident Investigation Team



Aviation is the Sheriff's Department "Air Force". This means that the division ensures sky surveillance, search and rescue missions, fire suppression, transportation of prisoners, and regular patrol functions. The unit is made up of a dozen helicopters and two fixed-wing aircrafts.

Public Affairs is the division that speaks for the Sheriff's Department. When reporters ask tough questions, it's the Public Information Officers who provide the answers. Public Affairs distributes a wealth of crime prevention information, both directly through publications and videos, and indirectly through various safety programs. The award-winning school safety program Operation CleanSWEEP finds its home here, along with the highly successful Juvenile Intervention Program (JIP). This innovative program allows troubled youth to see the inside of our correctional system, even providing an opportunity for inmates to share their stories and experiences, pleading with them to do the right thing and not end up in jail. The Crime Free Multi-Housing program promotes a crime free environment at local apartment complexes. The division also handles labor issues, community relations, and is responsible for the coordination of the Department's honor guard.

The **Narcotics Division** is comprised of several teams serving each county region. The division pursues every aspect of drug enforcement from the street dealer level to major drug distributors to the actual drug manufacturer. **The Special Weapons and Tactics Team (SWAT)** is based in the Narcotics Division. This team conducts regular intense training and is on call around the clock.

We haven't entirely lost our Western heritage in the Sheriff's Department: both regular and reserve deputies who are willing to engage in patrol functions make up our **Mounted Enforcement Unit**. These modern-day "cowboys" provide service at special events such as Hyundai Pavilion concerts, Fontana Speedway races, and they also participate in various crime sweeps.

Investigating fatal, near-fatal, and multiple-injury traffic collisions is the duty of our **Major Accident Investigation Team (MAIT)**. This vital unit covers all regions of the county and uses the latest concepts and technology to present clear and accurate findings.



Volunteer Forces

The **Volunteer Forces Unit**, a component of the Emergency Operations Division, is comprised of six trained emergency management professionals. They oversee almost 2,000 volunteers who donate approximately 500,000 hours of time to the Department. They will respond at a moment's notice to the most treacherous parts of this county to render aid to a citizen in need. They respond to large-scale incidents to provide support to various jurisdictions, and they maintain and monitor the Department's state of preparedness for any emergency.

Volunteers assist paid deputies in a variety of assignments. These volunteers are a large component of our emergency response teams and are highly trained in their respective fields:

- **Citizen Patrol** personnel augment the station patrol forces as the eyes and ears of the patrol deputies
- **Search and Rescue** personnel respond at a moment's notice to search for lost citizens in the mountains and deserts of the county
- **Reserve Deputies** provide the same services as regular deputy sheriffs by patrolling, responding to calls, and making arrests
- **The Chaplain Corps** provides support to Department employees and citizens during difficult and often traumatic incidents
- **Explorer Scouts** are introduced to careers in public safety at an early age

The efforts of these concerned citizens enable the Sheriff's Department to provide a much higher level of service to the citizens of the county. Their hours of service also save the county several million dollars each year. Volunteer Forces is recognized as a model for other public service agencies to follow.





Reserves



In 2005, 125 **reserve deputies** volunteered more than 41,595 hours to the Department. Reserves can be found working hard throughout the Department, in units such as patrol, Court Services, Mounted Enforcement, Training, Posse, and Specialized Investigations, just to name a few. Many of our Search & Rescue and Posse members are also reserve deputies who donate their time and expertise to more than one volunteer unit.

Our Level I and Level II Reserve Deputies go out on patrol, above and beyond the minimum required hours, handling calls alongside our regulars, and in many cases in place of our regulars. They have the authority to perform all of the same duties as a paid deputy sheriff: taking reports, making arrests, testifying in court, and risking their lives to help others.



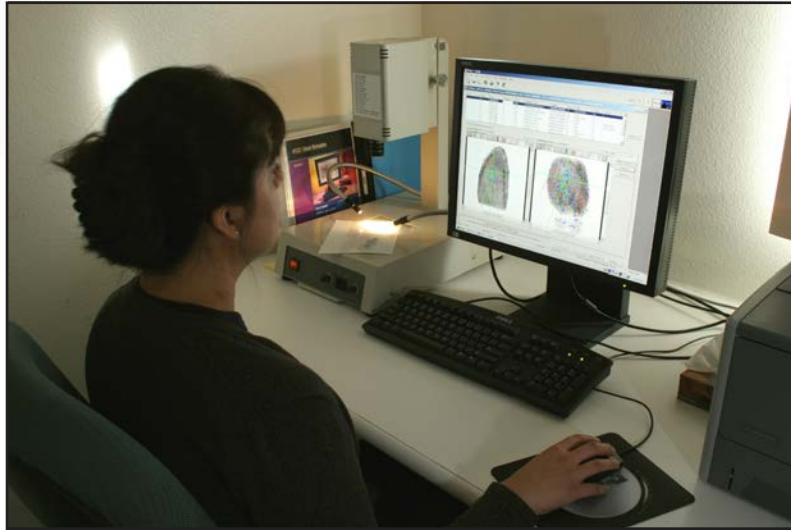
San Bernardino County Coroner's Division

On January 8th of this past year, the County Board of Supervisors voted to merge the Sheriff's Department with the Coroner's Office. The Coroner's Office had been in existence since 1854 and had been supervised by the county coroner, an elected position.

The day to day operation of the Coroner's Division is now overseen by Captain Bart Belknap who reports directly to Deputy Chief Bill Abernathy. The division consists of 35 highly trained dedicated personnel. They are tasked with investigating the cause and manner of death of individuals who die in San Bernardino County. In the last calendar year, this division investigated 9,552 cases. We are extremely proud to welcome this division into our family.



Scientific Investigations



The **Scientific Investigations Division (SID)** is divided into several units, all of which serve law enforcement agencies throughout the county. Evidence of a crime is often uncovered through the professionals in this division.

The **Trace Evidence Unit** performs forensic examinations on fire debris, gunshot residue samples, fibers, paint, and shoe and tire impressions. A new tool – the gas chromatograph/mass spectrometer – was recently added to the unit to help identify ignitable liquids and residues in the analysis of fire debris.

The **Firearms/Toolmarks Unit** examines bullets, cartridge cases, firearms and toolmarks. Comparative analysis will determine if bullets were fired from a known weapon, or if toolmarks were made by a particular tool. This unit determines distance on gunshots, processes officer-involved shootings, and enters fired cartridge cases into a national database.

The **CAL-ID** division is divided into two sub-units, the Ten Print Section and the Latent Print Section. Employees in these sub-units perform detailed examinations of fingerprints to identify potential suspects from crime scenes. CAL-ID also provides Live Scan Fingerprint devices for local police and Sheriff's facilities throughout the county. The CAL-ID division can search fingerprints against local, state and federal databases. These databases have a combined total of over 65 million prints.

The **Controlled Substances Unit** reviewed evidence in 12,500 cases last year, ranging from a few grains of suspected marijuana to several kilograms of heroin or cocaine. These analyses were conducted utilizing the GC/MS, Fourier Transform Infrared spectrometry, and microcrystal tests. In spite of the heavy workload, turnaround times averaged only five days.

The **Forensic Alcohol Unit** analyzed 7,800 blood alcohol samples in 2005. The unit is responsible for maintaining and calibrating breath alcohol equipment used countywide. Turnaround times for blood alcohol tests averaged only one day.

The **Clandestine Laboratory Unit** is responsible for responding to suspected drug manufacturing sites where they collect potentially hazardous materials. The unit completes investigations in a timely manner, forwarding documentation to the District Attorney's Office for criminal prosecution.



Scientific Investigations



In 2005, the **Forensic Biology Unit** identified 30 suspects through the Combined DNA Index System (CODIS) which matched suspects at the local, state and national levels. Some of these matches were made on cases that had been previously unsolved. The cases included crimes of sexual assault, robbery, and homicide. Two grants from the National Institute of Justice provided the funds for training DNA analysts and for the purchase of DNA processing equipment.

The **Crime Scene Investigations Unit** (CSI) responds to major crime scenes using the latest techniques to identify and collect evidence. It also conducts bullet trajectory and bloodstain pattern analysis. Personnel from this unit responded to more than 250 calls for service, attended over 100 autopsies, and processed over 70 vehicles. CSI is also responsible for the processing of physical evidence that may contain latent fingerprints. Over 6,200 items were processed in 2005.

The **Property Unit** for the Crime Lab currently stores approximately 60,000 items. All dispositions of money, drugs and weapons are done through this unit. This unit has the overall responsibility for verifying that evidence is being properly stored. Monthly inspection audits, as well as yearly audits, are routinely conducted in order to ensure the integrity of our evidence storage.



Sheriff's Training Center



The **Frank Bland Regional Training Center** continues to provide excellent training to the law enforcement professional. The Training Center is comprised of four divisions including the Basic Academy, Advanced Officer Training, the Range and EVOC.

Due to the recent growth of local police and sheriff's departments, the **Basic Academy** staff has trained over 450 new recruits in the past year. This growth trend is expected to continue into the next year. The training center continues the quest to inspire our next generation of law enforcement.

The **Advanced Officer Training Unit** emphasizes ongoing education throughout an officer's career. They offer courses on Counter-Terrorism, Officer Survival, Traffic Accident Investigation, Gang Awareness, Search and Rescue, Racial Profiling and Mounted Enforcement to name a few. The Employee Development Unit is in the process of developing many new courses designed to improve our employees job skills and promotional potential. For example, employees can now pursue a Bachelor's degree from California State University at Long Beach and a Master's degree program may be added in the near future.

Five shooting ranges, one long-rifle range, and one skeet range can be found at the **Sheriff's Range**. The largest live-fire house in the nation can be found there as well. Courses include Firearms Instructor, Defensive Tactics Instructor, Sniper, and Chemical Agents to name a few.

The **Emergency Vehicle Operations Center (EVOC)** is a law enforcement driver-training facility known throughout the country for its outstanding instruction of motorcycle officers, firefighters, ambulance drivers, patrol officers, and the general public. Public courses include: Teenage Survival Driving, Advanced Defensive Driving, and Armored Transport.



Giving Back

In the continuing quest to inspire the next generation, Department members and their families contributed countless hours of personal time and donated money to the communities they serve.

Every Christmas season our Department puts together what we call the Sheriff's **"Gift of Love"**. The event includes a dinner and gift-giving that distributes toys and clothing to mothers and children from local domestic violence shelters. Last December, \$6,654 was raised to benefit over 300 moms and their children.

Department personnel raised over \$10,900 for the Juvenile Diabetes Research Foundation. This was achieved through the annual **"Walk to Cure Diabetes"** event, on September 10th at Guasti Park in Rancho Cucamonga.

"Desert Thunder" raised \$20,000 for five children's charities in a motorcycle ride that took place October 14th-16th. About 800 people rode from Barstow, California to Primm, Nevada as part of the fundraiser. Donations were distributed to dental programs for underprivileged children, as well as to Boys and Girls Clubs, Loma Linda Children's Hospital, San Bernardino County Children's Fund, and the Las Vegas After-School All Stars.



The **6th Annual Sheriff's Rodeo**, held in September, raised more than \$50,000 for charities. Donations were made to the Boy Scouts, the Girl Scouts, the 4-H Organization, and the Challenged Children's Rodeo.



The **Concerns of Police Survivors (C.O.P.S)** is a group that helps provide comfort and resource assistance to families. Our 8th Annual Sheriff's Family Picnic and Motorcycle Ride was held on June 12th. Over 400 motorcycles were registered and 500 people participated in the barbeque. \$10,000 was ultimately raised for C.O.P.S.



Each and every year the Sheriff's Department participates heavily in the **United Way Combined Giving** campaign. This year over \$24,000 was contributed to the campaign.



In Memory

In the line of duty . . .



Greg Gariepy

July 2, 1965 - June 22, 2005

Danny Lobo

November 15, 1970 - October 11, 2005



In Memory

Well Done, Thy Good And Faithful Servants

*The badge no longer on my chest
I sleep now in eternal rest
My sword I pass to those behind
And pray they keep this thought in mind*

*I never dreamed it would be me
And with heavy heart and bended knee
I ask for all here from the past
Dear God, let my name be the last*

Greg and Danny

They shall never be forgotten!



Excerpts from "The Monument" By Sergeant George Hahn, C.A.P.D. (Retired)



Bureau of Administration

The Bureau of Administration (B of A) operates directly with Station Commanders, Division Chiefs, and County Administrators. The B of A is comprised of subdivisions including Budget and Finance, Automotive Services, Field Support, Contract Administration, and the Business Office. The combined budget for the 14 cities that contract with the Sheriff Department is 64 million dollars. The Corrections Bureau is responsible for the largest portion of the budget as it consists of over 103 million dollars. The Bureau of Administration does an excellent job of managing the Department's 360 million dollar budget.

COUNTY PATROL STATIONS

Barstow Station	\$	6,360,253
Big Bear Station	\$	3,244,605
Central Station	\$	5,461,113
Chino Hills Station	\$	3,138,676
Colorado River Station	\$	4,447,745
Fontana Station	\$	6,173,854
Morongo Basin Station	\$	5,320,269
Twin Peaks Station	\$	3,716,723
Victor Valley Station	\$	8,017,845
Yucaipa Station	\$	2,637,167
Total	\$	48,518,250

CONTRACT CITIES

Adelanto	\$	2,831,472
Apple Valley	\$	5,671,074
Big Bear Lake	\$	1,577,258
Chino Hills	\$	5,607,362
Grand Terrace	\$	1,265,592
Hesperia	\$	5,947,465
Highland	\$	4,291,047
Loma Linda	\$	1,602,838
Needles	\$	1,338,800
Rancho Cucamonga	\$	17,114,976
Twentynine Palms	\$	1,591,817
Victorville	\$	9,698,457
Yucaipa	\$	3,594,491
Yucca Valley	\$	2,021,986
Total	\$	64,154,635

Other Stations/Divisions	\$	49,047,988
Special Revenue Funds	\$	22,967,249

SPECIALIZED UNITS

Aviation Division	\$	4,921,434
Coroner Division	\$	4,221,588
Communications	\$	8,970,408
Court Services	\$	19,063,510
Narcotics Division	\$	7,321,397
Range	\$	2,015,382
Records	\$	2,384,364
Scientific Investigations	\$	7,312,634
Specialized Detectives	\$	7,829,975
Technical Services	\$	5,273,511
Training	\$	2,956,529
Volunteer Forces	\$	968,707
Total	\$	73,239,439

CORRECTIONS & DETENTIONS

Administration	\$	2,188,782
Corrections Maintenance	\$	3,264,096
Food Services	\$	11,458,779
Health Services	\$	11,017,277
Transportation	\$	5,553,259
Adelanto Detention Center	\$	7,900,506
Central Detention Center	\$	13,022,690
Glen Helen Rehabilitation Center	\$	9,042,724
Women's Detention Center	\$	1,789,202
West Valley Detention Center	\$	37,418,718
Work Release Program	\$	899,549
Total	\$	103,555,582

TOTAL BUDGET

\$ 361,483,143



Statistics

CENTRAL STATION

Population: 40,296

Crimes Reported

Square Miles: 95

STATION ACTIVITY

TOTALS PER DEP

Calls for Service	33,208	1,145
Deputy Reports	7,288	251
Arrests (Adult Booking)	2,605	90
Traffic Collision Investigations	54	2
Traffic Citations Issued	2,085	72
Residents Per Deputy	1,390	
Patrol Deputies	29	

Percent Change

	2004	2005	'04-'05
Murder	5	6	20%
Manslaughter	0	0	0%
Rape	12	10	-17%
Robbery	68	51	-25%
Aggravated Assault	95	122	28%
Simple Assault	327	294	-10%
Burglary	314	264	-16%
Larceny	467	339	-27%
GTA	382	318	-17%
Part I Total	1,670	1,404	-16%
Part II Total	4,216	4,811	14%
Grand Total	5,886	6,215	6%

CHINO HILLS STATION

Population: 26,276

Crimes Reported

Square miles: 65

STATION ACTIVITY

TOTALS PER DEP

Calls for Service	15,155	798
Deputy Reports	3,197	168
Arrests (Adult Booking)	1,093	58
Traffic Collision Investigations	3	0.2
Traffic Citations Issued	1,322	70
Residents Per Deputy	1,383	
Patrol Deputies	19	

Percent Change

	2004	2005	'04-'05
Murder	2	0	-100%
Manslaughter	0	0	0%
Rape	5	5	0%
Robbery	24	11	-54%
Aggravated Assault	34	45	32%
Simple Assault	119	127	7%
Burglary	127	108	-15%
Larceny	236	223	-6%
GTA	98	114	16%
Part I Total	645	633	-2%
Part II Total	1,878	2,414	29%
Grand Total	2,523	3,047	21%

CITY OF CHINO HILLS

Population: 77,819

Crimes Reported

Square Miles: 45

STATION ACTIVITY

TOTALS PER DEP

Calls for Service	32,814	1,059
Deputy Reports	5,809	187
Arrests (Adult Booking)	854	28
Traffic Collision Investigations	551	18
Traffic Citations Issued	5,380	174
Residents Per Deputy	2,510	
Patrol Deputies	31	

Percent Change

	2004	2005	'04-'05
Murder	2	4	100%
Manslaughter	0	0	0%
Rape	8	7	-13%
Robbery	13	18	38%
Aggravated Assault	53	71	34%
Simple Assault	182	160	-12%
Burglary	257	259	1%
Larceny	673	705	5%
GTA	158	128	-19%
Part I Total	1,346	1,352	0%
Part II Total	3,050	4,188	37%
Grand Total	4,396	5,540	26%

FONTANA STATION

Population: 63,872

Crimes Reported

Square Miles: 89

STATION ACTIVITY

TOTALS PER DEP

Calls for Service	41,787	1,229
Deputy Reports	7,873	232
Arrests (Adult Booking)	2,721	80
Traffic Collision Investigations	3	0.09
Traffic Citations Issued	701	21
Residents Per Deputy	1,879	
Patrol Deputies	34	

Percent Change

	2004	2005	'04-'05
Murder	8	10	25%
Manslaughter	0	0	0%
Rape	16	11	-31%
Robbery	103	72	-30%
Aggravated Assault	191	170	-11%
Simple Assault	691	503	-27%
Burglary	426	379	-11%
Larceny	1,094	864	-21%
GTA	693	656	-5%
Part I Total	3,222	2,665	-17%
Part II Total	4,495	4,378	-3%
Grand Total	7,717	7,043	-9%

N/C= Not Calculable



Statistics

CITY OF GRAND TERRACE

Population: 12,392

Crimes Reported

Square Miles: 4

STATION ACTIVITY	TOTALS	PER DEP
Calls for Service	12,362	1,766
Deputy Reports	1,451	207
Arrests (Adult Booking)	248	35
Traffic Collision Investigations	32	5
Traffic Citations Issued	2,364	338
Residents Per Deputy	1,770	
Patrol Deputies	7	

Percent Change

	2004	2005	'04-'05
Murder	0	0	0%
Manslaughter	0	0	0%
Rape	2	1	-50%
Robbery	8	9	13%
Aggravated Assault	6	8	33%
Simple Assault	23	35	52%
Burglary	68	83	22%
Larceny	156	184	18%
GTA	70	46	-34%
Part I Total	333	366	10%
Part II Total	634	806	27%
Grand Total	967	1,172	21%

CITY OF LOMA LINDA

Population: 21,592

Crimes Reported

Square Miles: 7

STATION ACTIVITY	TOTALS	PER DEP
Calls for Service	16,070	1,786
Deputy Reports	2,841	316
Arrests (Adult Booking)	414	46
Traffic Collision Investigations	286	32
Traffic Citations Issued	1,893	210
Residents Per Deputy	2,399	
Patrol Deputies	9	

Percent Change

	2004	2005	'04-'05
Murder	1	2	100%
Manslaughter	0	0	0%
Rape	2	4	100%
Robbery	24	16	-33%
Aggravated Assault	9	13	44%
Simple Assault	65	75	15%
Burglary	206	139	-33%
Larceny	371	350	-6%
GTA	153	137	-10%
Part I Total	831	736	-11%
Part II Total	1,442	1,387	-4%
Grand Total	2,273	2,123	-7%

CITY OF HIGHLAND

Population : 50,860

Crimes Reported

Square Miles: 19

STATION ACTIVITY	TOTALS	PER DEP
Calls for Service	36,408	1,655
Deputy Reports	7,171	326
Arrests (Adult Booking)	1,308	59
Traffic Collision Investigations	379	17
Traffic Citations Issued	3,914	178
Residents Per Deputy	2,312	
Patrol Deputies	22	

Percent Change

	2004	2005	'04-'05
Murder	4	7	75%
Manslaughter	0	0	0%
Rape	10	9	-10%
Robbery	85	82	-4%
Aggravated Assault	89	110	24%
Simple Assault	248	243	-2%
Burglary	314	330	5%
Larceny	739	715	-3%
GTA	381	382	0%
Part I Total	1,870	1,878	0%
Part II Total	4,572	4,322	-5%
Grand Total	6,442	6,200	-4%

CITY OF RANCHO CUCAMONGA

Population: 161,830

Crimes Reported

Square Miles: 36

STATION ACTIVITY	TOTALS	PER DEP
Calls for Service	118,114	1,243
Deputy Reports	17,591	185
Arrests (Adult Booking)	5,588	59
Traffic Collision Investigations	1,919	20
Traffic Citations Issued	15,710	165
Residents Per Deputy	1,703	
Patrol Deputies	95	

Percent Change

	2004	2005	'04-'05
Murder	4	2	-50%
Manslaughter	0	1	N/C
Rape	22	35	59%
Robbery	97	134	38%
Aggravated Assault	140	201	44%
Simple Assault	364	355	-2%
Burglary	801	768	-4%
Larceny	2,747	2,922	6%
GTA	778	704	-10%
Part I Total	4,953	5,122	3%
Part II Total	10,051	10,923	9%
Grand Total	15,004	16,045	7%

N/C= Not Calculable



Statistics

TWIN PEAKS STATION

Population: 34,169

Crimes Reported

Square Miles: 135

STATION ACTIVITY	TOTALS	PER DEP
Calls for Service	21,557	1,078
Deputy Reports	4,147	207
Arrests (Adult Booking)	808	40
Traffic Collision Investigations	0	0
Traffic Citations Issued	608	30
Residents Per Deputy	1,708	
Patrol Deputies	20	

	2004	2005	Percent Change '04-'05
Murder	2	2	0%
Manslaughter	0	0	0%
Rape	11	6	-45%
Robbery	8	7	-13%
Aggravated Assault	102	83	-19%
Simple Assault	143	172	20%
Burglary	410	383	-7%
Larceny	389	482	24%
GTA	98	148	51%
Part I Total	1,163	1,283	10%
Part II Total	2,549	2,306	-10%
Grand Total	3,712	3,589	-3%

CITY OF YUCAIPA

Population: 49,388

Crimes Reported

Square Miles: 27

STATION ACTIVITY	TOTALS	PER DEP
Calls for Service	35,217	1,677
Deputy Reports	6,488	309
Arrests (Adult Booking)	1,505	72
Traffic Collision Investigations	447	21
Traffic Citations Issued	4,820	230
Residents Per Deputy	2,352	
Patrol Deputies	21	

	2004	2005	Percent Change '04-'05
Murder	0	3	N/C
Manslaughter	0	0	0%
Rape	6	3	-50%
Robbery	18	12	-33%
Aggravated Assault	58	53	-9%
Simple Assault	166	128	-23%
Burglary	205	208	1%
Larceny	578	468	-19%
GTA	126	179	42%
Part I Total	1,157	1,054	-9%
Part II Total	4,037	5,068	26%
Grand Total	5,194	6,122	18%

YUCAIPA STATION

Population: 9,140

Crimes Reported

Square Miles: 225

STATION ACTIVITY	TOTALS	PER DEP
Calls for Service	8,888	741
Deputy Reports	1,327	111
Arrests (Adult Booking)	181	15
Traffic Collision Investigations	0	0
Traffic Citations Issued	249	21
Residents Per Deputy	762	
Patrol Deputies	12	

	2004	2005	Percent Change '04-'05
Murder	0	1	N/C
Manslaughter	0	0	0%
Rape	5	10	100%
Robbery	7	6	-14%
Aggravated Assault	14	24	71%
Simple Assault	58	45	-22%
Burglary	51	51	0%
Larceny	95	92	-3%
GTA	29	41	41%
Part I Total	259	270	4%
Part II Total	988	1,021	3%
Grand Total	1,247	1,291	4%

CITY OF ADELANTO

Population: 23,418

Crimes Reported

Square Miles: 54

STATION ACTIVITY	TOTALS	PER DEP
Calls for Service	21,663	1,805
Deputy Reports	3,397	283
Arrests (Adult Booking)	881	73
Traffic Collision Investigations	185	15
Traffic Citations Issued	1,047	87
Residents Per Deputy	1,952	
Patrol Deputies	12	

	2004	2005	Percent Change '04-'05
Murder	6	1	-83%
Manslaughter	0	0	0%
Rape	8	8	0%
Robbery	11	23	109%
Aggravated Assault	56	67	20%
Simple Assault	107	139	30%
Burglary	231	264	14%
Larceny	202	261	29%
GTA	90	116	29%
Part I Total	711	879	24%
Part II Total	2,716	2,324	-14%
Grand Total	3,427	3,203	-7%

N/C= Not Calculable



Statistics

TOWN OF APPLE VALLEY

Population: 63,853

Crimes Reported

Square Miles: 73

STATION ACTIVITY	TOTALS	PER DEP
Calls for Service	49,843	1,719
Deputy Reports	8,482	292
Arrests (Adult Booking)	1,780	61
Traffic Collision Investigations	876	30
Traffic Citations Issued	6,291	217
Residents Per Deputy	2,202	
Patrol Deputies	29	

	2004	2005	Percent Change '04-'05
Murder	3	4	33%
Manslaughter	0	1	N/C
Rape	17	20	18%
Robbery	64	43	-33%
Aggravated Assault	144	186	29%
Simple Assault	197	216	10%
Burglary	542	602	11%
Larceny	1,143	1,226	7%
GTA	334	396	19%
Part I Total	2,444	2,694	10%
Part II Total	5,088	5,325	5%
Grand Total	7,532	8,019	6%

BIG BEAR STATION

Population: 16,410

Crimes Reported

Square Miles: 258

STATION ACTIVITY	TOTALS	PER DEP
Calls for Service	11,158	1,014
Deputy Reports	2,009	183
Arrests (Adult Booking)	721	66
Traffic Collision Investigations	7	0.6
Traffic Citations Issued	157	14
Residents Per Deputy	1,492	
Patrol Deputies	11	

	2004	2005	Percent Change '04-'05
Murder	3	0	-100%
Manslaughter	0	0	0%
Rape	8	3	-63%
Robbery	3	2	-33%
Aggravated Assault	46	44	-4%
Simple Assault	158	104	-34%
Burglary	110	157	43%
Larceny	171	185	8%
GTA	25	53	112%
Part I Total	524	548	5%
Part II Total	1,383	1,330	-4%
Grand Total	1,907	1,878	-2%

BARSTOW / TRONA STATION

Population: 23,888

Crimes Reported

Square Miles: 9,219

STATION ACTIVITY	TOTALS	PER DEP
Calls for Service	21,782	807
Deputy Reports	3,505	130
Arrests (Adult Booking)	1,386	51
Traffic Collision Investigations	0	0
Traffic Citations Issued	1,257	47
Residents Per Deputy	885	
Patrol Deputies	27	

	2004	2005	Percent Change '04-'05
Murder	7	3	-57%
Manslaughter	0	0	0%
Rape	5	7	40%
Robbery	17	20	18%
Aggravated Assault	70	120	71%
Simple Assault	176	170	-3%
Burglary	324	254	-22%
Larceny	355	259	27%
GTA	129	119	-8%
Part I Total	1,083	952	-12%
Part II Total	2,201	2,369	8%
Grand Total	3,284	3,321	1%

CITY OF BIG BEAR LAKE

Population: 6,148

Crimes Reported

Square Miles: 7

STATION ACTIVITY	TOTALS	PER DEP
Calls for Service	13,010	1,626
Deputy Reports	2,052	257
Arrests (Adult Booking)	602	75
Traffic Collision Investigations	169	21
Traffic Citations Issued	863	108
Residents Per Deputy	769	
Patrol Deputies	8	

	2004	2005	Percent Change '04-'05
Murder	0	0	0%
Manslaughter	0	0	0%
Rape	2	6	200%
Robbery	3	2	-33%
Aggravated Assault	41	40	-2%
Simple Assault	103	88	-15%
Burglary	86	114	33%
Larceny	202	225	11%
GTA	26	37	42%
Part I Total	463	512	11%
Part II Total	1,418	1,400	-1%
Grand Total	1,881	1,912	2%

N/C= Not Calculable



Statistics

COLORADO RIVER STATION *Population: 10,697*

Crimes Reported *Square Miles: 5,054*

STATION ACTIVITY	TOTALS	PER DEP
Calls for Service	6,214	565
Deputy Reports	727	66
Arrests (Adult Booking)	321	29
Traffic Collision Investigations	5	0.5
Traffic Citations Issued	249	23
Residents Per Deputy	972	
Patrol Deputies	11	

	2004	2005	Percent Change '04-'05
Murder	0	0	0%
Manslaughter	0	0	0%
Rape	1	0	-100%
Robbery	1	0	-100%
Aggravated Assault	9	9	0%
Simple Assault	17	31	82%
Burglary	46	64	39%
Larceny	75	80	7%
GTA	8	19	138%
Part I Total	157	203	29%
Part II Total	407	355	-13%
Grand Total	564	558	-1%

MORONGO BASIN STATION *Population: 23,784*

Crimes Reported *Square Miles: 2,729*

STATION ACTIVITY	TOTALS	PER DEP
Calls for Service	14,932	747
Deputy Reports	2,824	141
Arrests (Adult Booking)	796	40
Traffic Collision Investigations	6	0.3
Traffic Citations Issued	485	24
Residents Per Deputy	1,189	
Patrol Deputies	20	

	2004	2005	Percent Change '04-'05
Murder	2	1	-50%
Manslaughter	0	0	0%
Rape	7	7	0%
Robbery	5	10	100%
Aggravated Assault	12	74	517%
Simple Assault	152	115	-24%
Burglary	163	183	12%
Larceny	224	184	-18%
GTA	74	89	20%
Part I Total	639	663	4%
Part II Total	2,080	1,993	-4%
Grand Total	2,719	2,656	-2%

CITY OF HESPERIA *Population: 76,114*

Crimes Reported *Square Miles: 67*

STATION ACTIVITY	TOTALS	PER DEP
Calls for Service	54,019	1,801
Deputy Reports	8,535	285
Arrests (Adult Booking)	2,606	87
Traffic Collision Investigations	1,165	39
Traffic Citations Issued	4,730	158
Residents Per Deputy	2,537	
Patrol Deputies	30	

	2004	2005	Percent Change '04-'05
Murder	0	4	N/C
Manslaughter	0	0	0%
Rape	7	12	71%
Robbery	61	83	36%
Aggravated Assault	103	124	20%
Simple Assault	300	318	6%
Burglary	442	484	10%
Larceny	918	948	3%
GTA	461	606	31%
Part I Total	2,292	2,579	13%
Part II Total	4,111	4,935	20%
Grand Total	6,403	7,514	17%

CITY OF NEEDLES *Population: 5,553*

Crimes Reported *Square Miles: 30*

STATION ACTIVITY	TOTALS	PER DEP
Calls for Service	11,253	1,407
Deputy Reports	1,292	162
Arrests (Adult Booking)	705	88
Traffic Collision Investigations	76	9.5
Traffic Citations Issued	1,129	141
Residents Per Deputy	694	
Patrol Deputies	8	

	2004	2005	Percent Change '04-'05
Murder	0	0	0%
Manslaughter	0	0	0%
Rape	2	2	0%
Robbery	6	5	-17%
Aggravated Assault	25	25	0%
Simple Assault	65	80	23%
Burglary	64	57	-11%
Larceny	114	145	27%
GTA	21	27	29%
Part I Total	297	341	15%
Part II Total	921	923	0%
Grand Total	1,218	1,264	4%

N/C= Not Calculable



Statistics

CITY OF TWENTYNINE PALMS *Population: 27,337*

Crimes Reported *Square Miles: 55*

STATION ACTIVITY	TOTALS	PER DEP
Calls for Service	15,131	1,513
Deputy Reports	3,129	313
Arrests (Adult Booking)	758	76
Traffic Collision Investigations	203	20
Traffic Citations Issued	1,169	117
Residents Per Deputy	2,734	
Patrol Deputies	10	

	Percent Change		
	2004	2005	'04-'05
Murder	0	0	0%
Manslaughter	0	0	0%
Rape	6	9	50%
Robbery	12	6	-50%
Aggravated Assault	10	86	760%
Simple Assault	125	127	2%
Burglary	158	182	15%
Larceny	270	261	-3%
GTA	72	63	-13%
Part I Total	653	734	12%
Part II Total	2,077	2,226	7%
Grand Total	2,730	2,960	8%

CITY OF VICTORVILLE *Population: 86,473*

Crimes Reported *Square Miles: 73*

STATION ACTIVITY	TOTALS	PER DEP
Calls for Service	90,777	1,713
Deputy Reports	17,623	333
Arrests (Adult Booking)	3,801	72
Traffic Collision Investigations	2,169	41
Traffic Citations Issued	10,806	204
Residents Per Deputy	1,632	
Patrol Deputies	53	

	Percent Change		
	2004	2005	'04-'05
Murder	1	10	900%
Manslaughter	0	0	0%
Rape	19	31	63%
Robbery	178	157	-12%
Aggravated Assault	188	247	31%
Simple Assault	346	374	8%
Burglary	778	870	12%
Larceny	2,582	2,568	-1%
GTA	722	830	15%
Part I Total	4,814	5,087	6%
Part II Total	8,846	9,455	7%
Grand Total	13,660	14,542	6%

VICTOR VALLEY STATION *Population: 54,940*

Crimes Reported *Square Miles: 1,409*

STATION ACTIVITY	TOTALS	PER DEP
Calls for Service	33,876	996
Deputy Reports	5,095	150
Arrests (Adult Booking)	1,002	30
Traffic Collision Investigations	35	1
Traffic Citations Issued	652	19
Residents Per Deputy	1,616	
Patrol Deputies	34	

	Percent Change		
	2004	2005	'04-'05
Murder	3	4	33%
Manslaughter	0	0	0%
Rape	9	12	33%
Robbery	17	8	-53%
Aggravated Assault	100	112	12%
Simple Assault	195	197	1%
Burglary	318	323	2%
Larceny	499	484	-3%
GTA	227	222	-2%
Part I Total	1,368	1,362	0%
Part II Total	2,804	2,661	-5%
Grand Total	4,172	4,023	-4%

TOWN OF YUCCA VALLEY *Population: 19,726*

Crimes Reported *Square Miles: 40*

STATION ACTIVITY	TOTALS	PER DEP
Calls for Service	19,909	1,659
Deputy Reports	3,576	298
Arrests (Adult Booking)	833	69
Traffic Collision Investigations	347	29
Traffic Citations Issued	2,408	201
Residents Per Deputy	1,606	
Patrol Deputies	12	

	Percent Change		
	2004	2005	'04-'05
Murder	6	0	-100%
Manslaughter	0	1	N/C
Rape	7	6	-14%
Robbery	14	7	-50%
Aggravated Assault	14	55	293%
Simple Assault	153	102	-33%
Burglary	129	127	-2%
Larceny	298	251	-16%
GTA	55	94	71%
Part I Total	676	643	-5%
Part II Total	2,994	2,712	-9%
Grand Total	3,670	3,355	-9%

N/C= Not Calculable



Vision Statement

We believe in being a high performance, inclusive department with high professional standards of integrity, ethics and behavior -- guided by the letter and spirit of the law, and the law enforcement code of ethics. We will relentlessly investigate criminal acts and arrest those guilty of violating the law, while building positive relationships with those we serve. This requires each of us to:

- treat all people with respect, fairness and compassion;*
- value each employee's and citizen's contribution to the department and the community regardless of position, assignment or role;*
- create a work environment that encourages innovation, input and participation, and values each member's diversity;*
- work in partnership with each other and the community to reach an environment where we are all accountable and responsible to one another.*





www.sbcounty.gov/sheriff
909 387-3700