



BEHAVIORAL HEALTH

Promoting Wellness, Recovery and Resilience

COUNTY OF SAN BERNARDINO

Directory of Services

Wellness • Recovery • Resilience

COUNTY OF SAN BERNARDINO BOARD OF SUPERVISORS

CHAIR, JOSIE GONZALES, FIFTH DISTRICT
VICE-CHAIR, BRAD MITZELFELT, FIRST DISTRICT
JANICE RUTHERFORD, SECOND DISTRICT
NEIL DERRY, THIRD DISTRICT
GARY C. OVITT, FOURTH DISTRICT

COUNTY OF SAN BERNARDINO ADMINISTRATION

GREGORY C. DEVEREAUX, Chief Executive Officer
LORON COX, Assistant Executive Officer
LINDA HAUGAN, Assistant Executive Officer

COUNTY OF SAN BERNARDINO BEHAVIORAL HEALTH COMMISSION

SUSAN MCGEE-STEHSSEL, RN, MSN, CHAIRPERSON, FIFTH DISTRICT
MONICA WILSON, Ph.D., VICE CHAIRPERSON, FOURTH DISTRICT
TANYA PERRY, MA, ATR, SECRETARY, THIRD DISTRICT
VEATRICE JEWS, BS, CS, ASCP, TREASURER, FIFTH DISTRICT
DAVID H. FORD, FIRST DISTRICT
GABRIEL GONZALES, FIRST DISTRICT
WILLIAM A. SWIFT, MS, C.A.T.S., FIRST DISTRICT
MAY FARR, BSN, SECOND DISTRICT
MICHAEL HILL, SECOND DISTRICT
MONICA ALONSO, SECOND DISTRICT
CHRISTOPHER MASSA, THIRD DISTRICT
TOM RIVERA, Ed.D., THIRD DISTRICT
ROBERTO CASAS, Ed.D., FOURTH DISTRICT
JANE MERCER, Ph.D., FOURTH DISTRICT
JANE ANN GODAGER, LCSW, FIFTH DISTRICT
NEIL DERRY, BOS, THIRD DISTRICT
DEBI PASCO, CLERK OF THE COMMISSION

DEPARTMENT OF BEHAVIORAL HEALTH ADMINISTRATION

ALLAN RAWLAND, MSW, ACSW
Director
CASONYA THOMAS, MPA, CHC
Assistant Director
JATIN DALAL, M.D.
Medical Director, Medical Services
TANYA BRATTON
Deputy Director, Administrative Services
SARAH EBERHARDT-RIOS, MPA
Deputy Director, Program Support Services
VERONICA A. KELLEY, LCSW
Deputy Director, Regional Operations, Alcohol and Drug Services
LISA K. MC GINNIS, LMFT
Deputy Director, 24-Hour and Emergency Services
MICHAEL SCHERTELL, LMFT
Deputy Director, Regional Operations and Children Services
MARINA ESPINOSA, CHC
Chief Compliance Officer
VERONICA A. KELLEY, LCSW
Cultural Competency Officer

DIRECTORY OF SERVICES

TABLE OF CONTENTS

Administration.....	2
Patients' Rights	3
Access Unit.....	8
Prevention and Early Intervention.....	9
Mental Health Services.....	17
Alcohol and Drug Services.....	22
Children and Youth Collaborative Services.....	28
Adult Programs.....	33
Adult System of Care	34
Clubhouses	35
Community Crisis Services	37
Homeless Mentally Ill Programs.....	39
Housing and Employment Services.....	39
Older Adult System of Care	39
Acute Care Hospitals.....	40
Forensic Services	41
Juvenile Justice Programs	43

LEGEND:

A = Adult
CP = Contract Provider
S = School Based Children
Services
C = Children
ADS = Alcohol and Drug
Services
O = Outpatient
MH = Mental Health
Services
P = Prevention
R = Residential
M = Methadone

Behavioral Health Directory of Services

This Directory was developed as a tool to make the process easier for those in need of behavioral health services. In the Directory is a list of contact information for mental health and alcohol and drug services provided throughout the County of San Bernardino by Department of Behavioral Health (DBH) Programs and Contract Providers.

It is the goal of the department to provide accessible and effective services that promote wellness, recovery and resiliency.

Thank you for your interest in DBH and please visit our DBH website for more resources: <http://www.sbcounty.gov/dbh/>

ADMINISTRATION

DIRECTOR'S OFFICE

This office is responsible for the overall planning, implementation, direction, coordination and evaluation of the Department of Behavioral Health. Responsibilities include writing grant applications, developing assessment protocols and interpreting regulations.

Director's Office

268 W. Hospitality Lane, Suite 400
San Bernardino, CA 92415
(909) 382-3133 • Fax (909) 382-3105

OFFICE OF CULTURAL COMPETENCY AND ETHNIC SERVICES

The Office of Cultural Competency and Ethnic Services is responsible for embedding the tenants of cultural competency throughout all levels of the organization. Services include; multicultural education and training, language services such as translation and interpretation, as well as, assistance in the development of linguistically and culturally appropriate, recovery oriented services.

Office of Cultural Competence and Ethnic Services

268 W. Hospitality Lane, Suite 400
San Bernardino, CA 92415
(909) 382-3079 • Fax (909) 252-4088

OFFICE OF CONSUMER AND FAMILY AFFAIRS

The Office of Consumer and Family Affairs provides assistance and support to consumers and their families by linking them to appropriate services for treatment. Peer and Family Advocates enhance family participation in the treatment process and assist consumers in learning how to advocate and make choices to determine their path of recovery.

Office of Consumer and Family Affairs

268 W. Hospitality Lane, Suite 400
San Bernardino, CA 92415
(909) 252-4016 or (909) 252-4018
Fax (909) 252-4055



*"Everything
has beauty,
but not
everyone sees
it."*

Confucius

ADMINISTRATION

OFFICE OF COMPLIANCE

The DBH Office of Compliance is responsible for ensuring the department adheres to State and Federal regulations and guidelines regarding billing and coding, self-referrals, conflicts of interest, Deficit Reduction Act, auditing and monitoring. The Office of Compliance ensures members of the DBH workforce, including contractors, maintain required licenses and credentials and adhere to the Code of Conduct and applicable ethical standards set forth by the appropriate board. Additionally, the program creates, revises, and distributes standards, policies and procedures that promote adherence to department, county, state and federal policies, laws and regulations.

Office of Compliance

268 W. Hospitality Lane, Suite 400
San Bernardino, CA 92415
(909) 382-3083 or (800) 398-9736 hotline
Fax (909) 382-3105

MEDICAL RECORDS UNIT

The Medical Records Unit within the Office of Compliance is responsible for maintaining the security of physical medical records and the privacy of protected health information. The Unit is responsible for facilitating the release of medical record information via an authorized request or subpoena.

Medical Records Unit

850 E. Foothill Boulevard
Rialto, CA 92376
(909) 421-9350 • Fax (909) 421-9348

PATIENTS' RIGHTS

The Patients' Rights Office protects the patient, consumer and human rights of all recipients of psychiatric services. The Patients' Rights Office advocates and investigates complaints concerning mental health services, monitors mental health facilities, provides training and education regarding mental health law and ensures that recipients of mental health services are notified of their rights.

Patients' Rights

850 E. Foothill Boulevard
Rialto, CA 92376
(800) 440-2391 • Fax (909) 421-9258

LEGEND:

- A** = Adult
- CP** = Contract Provider
- S** = School Based Children Services
- C** = Children
- ADS** = Alcohol and Drug Services
- O** = Outpatient
- MH** = Mental Health Services
- P** = Prevention
- R** = Residential
- M** = Methadone

ADMINISTRATION

ADMINISTRATIVE SERVICES

The Administrative Services Division is responsible for budget preparation and monitoring, financial analysis, State and Federal cost reports, accounts payable, contracts management, billing (Medi-Cal, Medicare, insurance, private pay), client financial interviews, property management, purchasing, fiscal audits, personnel and payroll.

Administrative Services

268 W. Hospitality Lane, Suite 400
San Bernardino, CA 92415
(909) 382-3088 • Fax (909) 382-3105

AUDITING

The Internal Audits Unit is responsible for auditing contracts the department has with outside agencies. Its goal is to ensure fiscal compliance and review the accurateness of reimbursement claims submitted by contractors. Insight, recommendations and training are provided to contractors when necessary or requested.

Auditing

268 W. Hospitality Lane, Suite 400
San Bernardino, CA 92415
(909) 382-3119 • Fax (909) 382-3046

BUSINESS OFFICE

The Business Office is responsible for billing patient and third party payer sources, receiving and posting payments, auditing and adjusting accounts as well as providing technical assistance relating to billing and patient accounts to clinics and contract agency staff.

Business Office

268 W. Hospitality Lane, Suite 400
San Bernardino, CA 92415
(909) 382-3057 • Fax (909) 382-3060

CONTRACTS UNIT

The Contract Unit is responsible for the administration of procurements, contract development and monitoring, preparation of Board Agenda Items and special assignments. The unit works closely with outside agencies and the County Administrative Office.

Contracts Unit

268 W. Hospitality Lane, Suite 400
San Bernardino, CA 92415
(909) 382-3059 • Fax (909) 382-3060



*"Nothing is
too high for
a man to
reach, but he
must climb
with care and
confidence."*

Hans

Christian

Andersen

ADMINISTRATION

FACILITY & PROJECT MANAGEMENT

The purpose of the Facility and Project Management Unit is to provide supportive services to the staff of DBH through facility management, project management and warehouse, distribution and storage management. The three branches provide operational support to enhance and maintain the physical work environments, maximize delivery of program services and administer warehouse management and inventory control for DBH programs.

Facility & Project Management

268 W. Hospitality Lane, Suite 200
San Bernardino, CA 92415
(909) 382-3125 • Fax (909) 382-3192

FINANCIAL INTERVIEWERS

The Financial Interviewers are responsible for interviewing consumers using the State [UMDAP] fee schedule to determine their liability amount for services received. The liability amount is based on income, number of dependants, allowable expenses and any third party insurance (Medi-Cal, Medicare, Private Insurance) that may be billed.

Financial Interviewers-East Valley

820 E. Gilbert Street
San Bernardino, CA 92415
(909) 387-7742 or (909) 386-8556 • Fax (909) 387-0415

Financial Interviewers-Central Valley

850 E. Foothill Boulevard
Rialto, CA 92376
(909) 421-9412 • Fax (909) 421-9415

Financial Interviewers-Desert/Mountain

820 E. Gilbert Street
San Bernardino, CA 92415
(909) 387-0429 or (909) 387-7132 • Fax (909) 387-0415

Financial Interviewers-West Valley

17216 Slover Avenue, Building L
Fontana, CA 92337
(909) 854-3466 • Fax (909) 428-8436

LEGEND:

A = Adult

CP = Contract Provider

S = School Based Children
Services

C = Children

ADS = Alcohol and Drug
Services

O = Outpatient

MH = Mental Health
Services

P = Prevention

R = Residential

M = Methadone

ADMINISTRATION

FISCAL SERVICES

The Alcohol & Drug and Mental Health Program fiscal units are responsible for budget preparation and monitoring, financial analysis, State and Federal cost reports, procurement, accounts payable, accounts receivable, contracts management, Medi-Cal billing and fiscal audits.

Fiscal Services

268 W. Hospitality Lane, Suite 400
San Bernardino, CA 92415
(909) 382-3019 • Fax (909) 382-3107

HUMAN RESOURCES / PAYROLL

The Human Resources and Payroll Department is responsible for ensuring that all DBH employees receive the benefits and compensation that they are entitled to, such as salary, Worker's compensations, short term disability, etc. Provide assistance to the department in resolving personnel related matters. Assist the department in interpreting personnel related rules, regulations and policies, such as the MOU, Personnel Rule, Standard Practice Manual and Labor Laws.

Human Resources / Payroll

268 W. Hospitality Lane, Suite 200
San Bernardino, CA 92415
(909) 382-3154 • Fax (909) 382-3028

INFORMATION TECHNOLOGY

The Information Technology Unit is a team of dedicated professionals that are committed to providing the highest quality technology-based services to DBH customers. This objective is accomplished by offerings in the areas of:

- Application support
- Report development
- Communications and network support
- Server and desktop support
- Application development
- Business process re-engineering
- Implementation of new technologies

Information Technology

268 W. Hospitality Lane, Suite 200
San Bernardino, CA 92415
(909) 382-3112 • Fax (909) 382-3073



*"You can do
anything you
wish to do,
have anything
you wish to
have, be
anything you
wish to be."*

Robert Collier

ADMINISTRATION

PROGRAM SUPPORT SERVICES DIVISION

PUBLIC INFORMATION OFFICE

COMMUNITY OUTREACH AND EDUCATION

The Public Information Office (PIO) staff develop and implement effective communications and media relations to continually increase community awareness of department services.

Community Outreach and Education (CORE) conduct countywide community-based educational activities with various cultural and ethnic groups to increase knowledge regarding behavioral health services and access to community resources.

Public Information Office /Community Outreach and Education

268 W. Hospitality Lane, Suite 400
San Bernardino, CA 92415
(909) 382-3152 • Fax (909) 382-3046

QUALITY MANAGEMENT

The Quality Management Division enhances and supports the activities of DBH staff and contract agencies in complying with Federal, State and county regulations through training, utilization review, quality assurance and improvement activities. Additionally, Quality Management performs Medi-Cal certification for contract agencies, provides technical assistance and monitors quality of care.

Quality Management

850 E. Foothill Boulevard
Rialto, CA 92376
(909) 421-9456 • Fax (909) 873-4466

RESEARCH AND EVALUATION

The Research and Evaluation (R&E) section is a behavioral health information work group responsible for providing data and analysis for administration and treatment programs. Projects include the design and development of a fully integrated clinical information system with reporting, dash boarding, data warehouse, and data mining functionality. The main goal of R&E is organizational and clinical data to maximize efficiency and provide the best behavioral health services possible to consumers.

Research and Evaluation

268 W. Hospitality Lane, Suite 400
San Bernardino, CA 92415
(909) 382-3149 • Fax (909) 382-3124

LEGEND:

A = Adult

CP = Contract Provider

S = School Based Children
Services

C = Children

ADS = Alcohol and Drug
Services

O = Outpatient

MH = Mental Health
Services

P = Prevention

R = Residential

M = Methadone

ADMINISTRATION

WORKFORCE EDUCATION AND TRAINING

The Workforce Education and Training Program develops and trains current and prospective behavioral health employees to ensure a workforce with maximum skills, capable of providing client and family driven, culturally competent services using effective methods that promote wellness, recovery and resiliency.

Workforce Education and Training

1950 S. Sunwest Lane, Suite 200
San Bernardino, CA 92415
(909) 252-4017 • Fax (909) 252-4055

ACCESS UNIT

The Access Unit is a call center comprised of mental health professionals that provide widespread linkages ranging from referrals to DBH clinics and/or fee for service providers to authorizations for outpatient services. This unit is available 24 hours a day, 7 days a week.

Access Unit

850 E. Foothill Boulevard
Rialto, CA 92376
(888) 743-1478 or (909) 381-2420
(888) 743-1481 [TDD] • Fax (909) 421-9272



*"The key to
success is to
keep growing
in all areas of
life -- mental,
emotional,
spiritual, as
well as
physical."*

Julius Erving

PREVENTION AND EARLY INTERVENTION

Prevention and Early Intervention programs are implemented in collaboration with other systems and organizations. They are delivered in natural community settings. The programs offer various prevention activities as well as short term community counseling. All programs work to link individuals in need of additional services to appropriate mental health agencies, primary care providers, grassroots organizations or local agencies for additional services as necessary.

PRESCHOOL SERVICES PROGRAM

The Preschool Services Program provides mental health support for diverse preschool children and education for their parents and teachers. The goal of this program is to prevent and reduce the occurrence of aggressive and oppositional behavior in preschool children in an effort to reduce the chance of delinquent behaviors later in life. The child must be ages 3-5 and currently be enrolled in the Head Start program.

SAN BERNARDINO

County of San Bernardino Preschool Services Department

662 S. Tippecanoe Avenue
San Bernardino, CA 92415
(909) 383-2000

STUDENT ASSISTANCE PROGRAM

The Student Assistance Program (SAP) is a school-based approach to providing focused services to diverse students and their families who are in need of prevention education and early interventions for substance abuse, mental health, academic, emotional and social issues. This program connects behavioral health, education, programs and services between the schools and community based organizations to create a network of supports to help students and their families. The SAP program aims to minimize barriers to learning, support students in developing academic and personal successes, reduce suicide rates, reduce incidences of mental illnesses and shorten the duration of untreated illnesses. No referral needed; individuals may contact agency directly.

REDLANDS

South Coast Community Services

721 Nevada Street, Suite 209
Redlands, CA 92373
(909) 792-0747 • Fax (909) 792-1057

SAN BERNARDINO

Valley Star Children and Family Services

1585 S. "D" Street, Suite 101
San Bernardino, CA 92408
(909) 388-2222 • Fax (909) 388-0220

LEGEND:

- A** = Adult
- CP** = Contract Provider
- S** = School Based Children Services
- C** = Children
- ADS** = Alcohol and Drug Services
- O** = Outpatient
- MH** = Mental Health Services
- P** = Prevention
- R** = Residential
- M** = Methadone

PREVENTION AND EARLY INTERVENTION

SKYFOREST

Rim Family Services

28545 Highway 18
Skyforest, CA 92385
(909) 336-1800 • Fax (909) 336-0990

UPLAND

Reach Out, Inc.

1126 W. Foothill Boulevard, Suite 150
Upland, CA 91786
(909) 982-8641 Ext. 108 • Fax (909) 982-8642

VICTORVILLE

Victor Community Support Services

14360 St. Andrews Drive, Suites 7 & 11
Victorville, CA 92395
(760) 780-4750 • Fax (760) 245-5896

RESILIENCE PROMOTION IN AFRICAN AMERICAN CHILDREN

The Resilience Promotion in African American Children provides prevention and early intervention services to African-American children, youth and their families by incorporating African-American values, beliefs and traditions in mental health educational programs. This program promotes resilience in African-American children in order to mediate the development of mental health and/or substance abuse disorders. The program begins with a twelve week daily, intensive school-based program followed by on-going weekly interventions, linkages to resources and tracking off site at youth centers, churches or other community settings until adulthood. No referral needed; individuals may contact agency directly.

SAN BERNARDINO

The LaBaron Group, Inc.

1777 W. Baseline Street
San Bernardino, CA 92411
(909) 919-7797 or (951) 675-2750 • Fax (909) 386-1868

Mailing Address:

P.O. Box 7037
San Bernardino, CA 92411



*"Nothing is
impossible to a
willing heart."*

*Robert
Schuller*

PREVENTION AND EARLY INTERVENTION

FAMILY RESOURCE CENTERS (FRC)

The FRCs offer various programs that are tailored to be culturally and linguistically competent and meet the identified needs of the communities they serve. Services offered include prevention and leadership programs for children, youth and TAY, mental health education workshops, community counseling, adult skill based education programs and parenting support. No referral needed; individuals may contact agency directly.

MENTONE

Mentone Elementary School

1320 Crafton Avenue
Mentone, CA 92359
(909) 794-7753 • Fax (909) 793-8823

MONTCLAIR

Montclair Community Collaborative

10200 Lehigh Avenue
Montclair, CA 91763
(909) 445-1618 or (909) 445-1617 • Fax (909) 445-1620

ONTARIO

Ontario-Montclair School District (4 sites)

950 W. "D" Street
Ontario, CA 91762
(909) 445-1618 or (909) 445-1617

Family Solutions

1556 S. Sultana Avenue
Ontario, CA 91761
(909) 418-6923

Para los Niño's

531 N. Euclid Avenue
Ontario, CA 91762
(909) 230-6400 • Fax (909) 230-6406

REDLANDS

Building a Generation (4 sites)

129 E. Vine Street
Redlands, CA 92373
(909) 793-8822

Franklin Elementary

850 E. Colton Avenue
Redlands, CA 92374
(909) 307-5530 • Fax (909) 307-5539

LEGEND:

A = Adult

CP = Contract Provider

S = School Based Children
Services

C = Children

ADS = Alcohol and Drug
Services

O = Outpatient

MH = Mental Health
Services

P = Prevention

R = Residential

M = Methadone

PREVENTION AND EARLY INTERVENTION

Lugonia Elementary School
202 E. Pennsylvania Avenue
Redlands, CA 92374
(909) 307-2424

SAN BERNARDINO

Victoria Elementary
1505 Richardson Street
San Bernardino, CA 92408
(909) 307-2483

Knott's Family Agency

1505 W. Highland Avenue, Suite 19
San Bernardino, CA 92411
(909) 880-0600 • Fax (909) 473-1918

TWENTYNINE PALMS

Morongo Basin Mental Health

5910 Adobe Road
Twentynine Palms, CA 92277
(760) 361-7124 • Fax (760) 361-4059

VICTORVILLE

Victor Community Support Services

14360 St. Andrews Drive, Suites 7 & 11
Victorville, CA 92395
(760) 780-4750

YUCCA VALLEY

Morongo Basin Mental Health

58967 Business Center Drive, Suite C&D
Yucca Valley, CA 92284
(760) 369-3130 • Fax (760) 365-2695

NATIVE AMERICAN RESOURCE CENTER

The Native American Resource Center functions as a one-stop center for American Indian and Alaskan Native children, youth and families. The Center offers behavioral health prevention and early intervention resources, services and programs. The Center provides culturally based services including outreach and education, family support, parenting, youth empowerment, workforce development and education assistance utilizing strength based traditional Native American programs.

SAN BERNARDINO

Riverside-San Bernardino County Indian Health, Inc.

Native American Resource Center

2210 E. Highland Avenue, Suite 101 & 102
San Bernardino, CA 92404
(909) 864-1097 Ext. 3324 • Fax (909) 269-8464

PREVENTION AND EARLY INTERVENTION

PROMOTORES DE SALUD

(COMMUNITY HEALTH WORKERS)

The Promotores de Salud Program is a prevention program designed to address the needs of our culturally diverse Latino community. The overall objective of this program is to increase community awareness and connection to community-based prevention and behavioral health services without fear of discrimination or stigmatization. Promotores (Community Health Workers) promote mental health awareness, education and available resources for the members of various communities throughout the county in a culturally and linguistically appropriate manner. No referral needed; individuals may contact agency directly.

SAN BERNARDINO

El Sol Neighborhood Educational Center

1717 W. 5th Street
San Bernardino, CA 92411
(909) 884-3735

Mailing address:

P.O. Box 449
San Bernardino, CA 92411

NCTI CROSSROADS EDUCATION

The NCTI Crossroads Education Program is a curriculum-based education strategy delivered according to unique methods that foster positive, prosocial behavior in children and youth with emphasis on prior offenders. NCTI Crossroads is targeted for Children ages 10-15 and Transitional Age Youth (TAY) ages 16-25 with emphasis on those who are at risk of or involved in the juvenile justice system. Parenting classes are offered to the families of the children and TAY participating in the program. No referral needed; individuals may contact agency directly.

ONTARIO

South Coast Community Services

2930 Inland Empire Boulevard, Suite 200
Ontario, CA 91764
(909) 980-6700 • Fax (909) 980-6003

REDLANDS

South Coast Community Services

721 Nevada Street, Suite 209
Redlands, CA 92373
(909) 792-0747 • Fax (909) 792-1057

SAN BERNARDINO

Inland Valley Drug and Alcohol Recovery Services Central Valley

939 N. "D" Street
San Bernardino, CA 92410
(909) 889-6519 • Fax (909) 889-6560

LEGEND:

A = Adult

CP = Contract Provider

S = School Based Children
Services

C = Children

ADS = Alcohol and Drug
Services

O = Outpatient

MH = Mental Health
Services

P = Prevention

R = Residential

M = Methadone



*"All
progress
happens
because people
dare to be
different"*
Harry Milner

PREVENTION AND EARLY INTERVENTION

UPLAND

Inland Valley Drug and Alcohol Recovery Services Central Valley
934 N. Mountain Avenue, Suite A & B
Upland, CA 91786
(909) 932-1069 • Fax (909) 932-1087

YUCCA VALLEY

Morongo Basin Mental Health
55475 Santa Fe Trail
Yucca Valley, CA 92284
(760) 365-3022 Ext. 787

MILITARY SERVICES AND FAMILY SUPPORT PROGRAM

This program addresses the negative effects of traumatic events and other unique challenges of military life by providing in home prevention and early intervention behavioral health services. Services are provided to individuals who are Active Duty, National Guard, Reservist or have recently returned from a deployment and their families. No referral needed; individuals may contact agency directly

TWENTYNINE PALMS

Morongo Basin Mental Health
5910 Adobe Road, Suite A
Twentynine Palms, CA 92277
(760) 361-7124 • Fax (760) 361-4059

VICTORVILLE

Victor Community Support Services
15095 Amargosa Road, Suite 101
Victorville, CA 92395
(760) 780-4000 • Fax (760) 780-4005

LIFT PROGRAM

The LIFT Program seeks to improve the health, well being and self sufficiency of first-time, low-income mothers and their children. The services are delivered in the participant's home where nurses provide a comprehensive educational program designed to promote mothers' and other family members' effective physical and emotional care of their children. The nurses will link family members with needed health, mental health and human services and attempt to involve other participant family members and friends. Please contact the County of San Bernardino Preschool Services Department for more information.

SAN BERNARDINO

County of San Bernardino Preschool Services Department
662 S. Tippecanoe Avenue
San Bernardino, CA 92415
(909) 383-2043

PREVENTION AND EARLY INTERVENTION

COMMUNITY WHOLENESS AND ENRICHMENT

The program identifies and helps to manage the early onset of mental health symptoms in Transitional Age Youth (TAY) ages 16-25 and adults ages 26-59. It also educates families about their role in the recovery process. In addition, the program provides community education aimed at "de-stigmatizing" mental health issues and normalizing the entire mental health process in an effort to increase the likelihood of individuals accessing services. No referral needed; individuals may contact agency directly.

ONTARIO

Bilingual Family Counseling Services
317 W. "F" Street
Ontario, CA 91762
(909) 986-7111 • Fax (909) 986-0941

REDLANDS

South Coast Community Services
721 Nevada Street, Suite 209
Redlands, CA 92373
(909) 792-0747 • Fax (909) 792-1057

VICTORVILLE

Victor Community Support Services
14360 St. Andrews, Suite 11
Victorville, CA 92392
(760) 780-4750

YUCAIPA

South Coast Community Services
34324 Yucaipa Boulevard, Suites B-D
Yucaipa, CA 92399
(909) 790-1300 • Fax (909) 797-9687

OLDER ADULTS COMMUNITY SERVICES

The Older Adults Community Services Program provides prevention and early intervention services to older adults through mobile screening services, wellness services such as senior activities, home safety education and suicide prevention services. These services are delivered via a mobile unit, in senior centers, community centers and in the home. No referral needed; individuals may contact agency directly.

BIG BEAR LAKE

Lutheran Social Services
41945 Big Bear Boulevard, Suite 220
Big Bear Lake, CA 92315
(909) 866-5070 • Fax (909) 878-3228

LEGEND:

- A** = Adult
- CP** = Contract Provider
- S** = School Based Children Services
- C** = Children
- ADS** = Alcohol and Drug Services
- O** = Outpatient
- MH** = Mental Health Services
- P** = Prevention
- R** = Residential
- M** = Methadone



*"If there is no
struggle, there
is no progress."*

Frederick

Douglass

PREVENTION AND EARLY INTERVENTION

MORENO VALLEY

Family Service Association

21250 Box Springs Road, Suite 106
Moreno Valley, CA 92557
(951) 369-8036 • Fax (951) 369-8303

ONTARIO

West End Family Counseling

855 N. Euclid Avenue
Ontario, CA 91762
(909) 983-2020 • Fax (909) 983-6847

SAN BERNARDINO

Department of Aging and Adult Services

686 E. Mill Street
San Bernardino, CA 92415
(909) 891-9071 • Fax (909) 891-3919

CHILD AND YOUTH CONNECTION

The Child and Youth Connection Program provides prevention services to foster and juvenile justice involved children and transitional age youth (TAY). This program is a collaboration between the Department of Behavioral Health, the Juvenile Public Defender's Office and Children's Network. Referrals can be made from the judicial system, foster agencies, schools and mental health providers.

SAN BERNARDINO

Department of Behavioral Health

900 E. Gilbert Street, Cottage 4
San Bernardino, CA 92415
(909) 387-7406 • Fax (909) 393-9688

San Bernardino County Children's Network

825 E. Hospitality Lane, 2nd Floor
San Bernardino, CA 92415
(909) 383-9685 • Fax (909) 383-9688

San Bernardino County Juvenile Public Defender's Office

900 E. Gilbert Street, Building 5
San Bernardino, CA 92415
(909) 387-0441

MENTAL HEALTH SERVICES

Programs provided by the County of San Bernardino Department of Behavioral Health along with contracted agencies are committed to developing culturally and linguistically competent services. Mental health services include crisis intervention, assessment/referral, individual/group therapy, medication support, case management, drug/alcohol and psycho-educational workshops. Services are provided for children, youth, adults and older adults.

APPLE VALLEY

Desert Mountain SELPA – C, S, CP, MH, O

17800 Highway 18
Apple Valley, CA 92307
(760) 242-6333 • Fax (760) 242-6339

APPLE VALLEY

Desert Mountain SELPA – C, S, CP, MH, O

Desert Mountain SELPA/SART – C, MH, O
17800 Highway 18
Apple Valley, CA 92307
(760) 242-6336 • Fax (760) 946-0819

BARSTOW

Barstow Counseling Center – A, C, ADS, MH, O

805 E. Mountain View
Barstow, CA 92311
(760) 256-5026 • Fax (760) 256-5092

BIG BEAR LAKE

Lutheran Social Services – A, C, S, MH, CP, O

41945 Big Bear Boulevard, Suite 200
Big Bear Lake, CA 92315
(909) 866-5070 • Fax (909) 878-3228

CRESTLINE

Family Services Agency – C, O, CP, MH

23406 Crestforest Drive
Crestline, CA 92325
(909) 338-4689 • Fax (909) 338-8230

LEGEND:

A = Adult

CP = Contract Provider

S = School Based Children
Services

C = Children

ADS = Alcohol and Drug
Services

O = Outpatient

MH = Mental Health
Services

P = Prevention

R = Residential

M = Methadone



*"The best
motivation
always comes
from within."*

*Michael
Johnson*



MENTAL HEALTH SERVICES

FONTANA

Vista Community Counseling – A, C, S, MH, O
17216 Slover Avenue, Building L
Fontana, CA 92337
(909) 854-3420 • Fax (909) 428-8437

LUCERNE

Morongo Basin Mental Health – A, O, MH, ADS, CP
32770 Old Woman Springs Road
Lucerne Valley, CA 92356
Mail: PO Box 2025
(760) 248-6612 • Fax (760) 248-3389

NEEDLES

Needles Behavioral Health Center – A, C, O, MH
1300 Bailey Avenue
Needles, CA 92363
(760) 326-9313 • Fax (760) 326-9259

ONTARIO

Ontario Community Counseling – O, A, ADS, MH, CP
1647 E. Holt Boulevard
Ontario, CA 91761
(909) 933-6341 • Fax (909) 933-6355

ONTARIO

Pacific Clinics – C, S, CP, O, MH
2990 E. Inland Empire Boulevard, Suite 101
Ontario, CA 91764
(909) 980-3427 • Fax (909) 945-3426

ONTARIO

West End Family Counseling – A, C, S, CP, O, MH
855 N. Euclid Street
Ontario, CA 91762
(909) 983-2020 • Fax (909) 983-6847

POMONA

Project Sister Family Services – A, C, CP, MH, S, O, P
P.O. Box 1369
Pomona, CA 91769
(909) 623-1619 • Fax (909) 622-8389
(909) 626-4357 24-hour hotline

RANCHO CUCAMONGA

Rancho TAY Center – C, MH, P
9047 Arrow Route, Suite 107
Rancho Cucamonga, CA 91730
(877) 760-0770 or (909) 466-8696 • Fax (909) 948-0457



*"People grow
through
experience if
they meet life
honestly and
courageously.
This is how
character is
built."*

*Eleanor
Roosevelt*

MENTAL HEALTH SERVICES

REDLANDS

South Coast Community Services – A, C, CP, S, MH, O
721 Nevada Street, Suite 209
P.O. Box 7369
Redlands, CA 92373
(909) 792-0747 • Fax (909) 792-1057

RIALTO

Mesa Counseling Center – A, C, MH, O
850 E. Foothill Boulevard
Rialto, CA 92376
(909) 421-9200 • Fax (909) 421-9219

SAN BERNARDINO

EMQ Children and Family Services – C, CP, MH, O
572 N. Arrowhead Avenue, Suite 100
San Bernardino, CA 92401
(909) 266-2700 • Fax (909) 266-2790

SAN BERNARDINO

Family Service Agency of San Bernardino – C, CP, S, MH, O
1669 N. "E" Street
San Bernardino, CA 92405
(909) 886-6737 • Fax (909) 881-3871

LEGEND:

A = Adult

CP = Contract Provider

S = School Based Children
Services

C = Children

ADS = Alcohol and Drug
Services

O = Outpatient

MH = Mental Health
Services

P = Prevention

R = Residential

M = Methadone



MENTAL HEALTH SERVICES

SAN BERNARDINO

Phoenix Community Counseling Center – A, C, S, MH, O
820 E. Gilbert Street
San Bernardino, CA 92415
(909) 387- 7200 • Fax (909) 387-7717 or (909) 386-8520

SAN BERNARDINO

Rolling Start – A, C, O, P, CP, S, MH
570 W. Fourth Street #107
San Bernardino, CA 92401
(909) 884-2129 • Fax (909) 386-7446

SAN BERNARDINO

San Bernardino Sexual Assault Services, Inc. – A, CP, MH, O
Rape/Sexual Assault Crisis Counseling
444 N. Arrowhead Avenue, Suite 101
San Bernardino, CA 92401
(909) 885-8884 • Fax (909) 383-8478
(800) 656-4673 24-hour hotline

SAN BERNARDINO

Valley Star Children and Family Services – C, S, CP, MH, O
1585 S. "D" Street, Suite 101
San Bernardino, CA 92408
(909) 388-2222 • Fax (909) 388-2220

SAN BERNARDINO

Valley Star High School (Day Rehabilitation Program) – C, CP, Day Rehabilitation
School District or SELPA Referral Required
9355 N. Opal
Mentone, CA 92359
(909) 705-5998 • Fax (909) 389-9431

SAN BERNARDINO

Victor Community Support Services, Inc. – C, S, CP, O, MH
1908 S. Business Center Drive
San Bernardino, CA 92408
(909) 890- 5930 • Fax (909) 890-5950

TRONA

College Community Services – A, C, O, MH, CP
82820 Trona Road
Trona, CA 93562
(760) 372-4524 • Fax (760) 372-4526

TWENTYNINE PALMS

Morongo Basin Counseling & Recovery Center – A, C, CP, ADS, O, MH, S
5910 Adobe Road, Suite E
Twentynine Palms, CA 92277
(760) 361-7124 • Fax (760) 361-4059

MENTAL HEALTH SERVICES

UPLAND

Upland Community Counseling – A, C, O, MH, S
934 N. Mountain Avenue, Suite C
Upland, CA 91786
(909) 579-8100 • Fax (909) 579-8149

VICTORVILLE

High Desert Center Inc. – High Desert Child, Adolescent and Family Services Center – A, C, MH, CP
16248 Victor Street
Victorville, CA 92392
(760) 243-7151 • Fax (760) 952-1432

VICTORVILLE

Victor Community Support Services- Desert Mountain – S, C, CP, O, P, MH,
15095 Amargosa Road, Suite 201
Victorville, CA 92395
(760) 245-4695 • Fax (760) 513-4696

VICTORVILLE

Victor Valley Behavioral Health – A, C, O, MH
12625 Hesperia Road
Victorville, CA 92395
(760) 955-1777 • Fax (760) 955-2356

YUCAIPA

South Coast Community Services – A, C, CP, S, MH, O, P
34324 Yucaipa Boulevard, Suite B – D
Yucaipa, CA 92399
(909) 790-0210 • Fax (909) 797-9687

YUCCA VALLEY

Morongo Basin Mental Health Services Association, Inc. – A, C, CP, ADS, O, MH
55475 Santa Fe Trail
Yucca Valley, CA 92284
(760) 365-3022 • Fax (760) 365-5923

YUCCA VALLEY

Pacific Clinics – C, O, CP, MH, S, P
58945 Business Center Drive, Suite D
Yucca Valley, CA 92284
(760) 228-9657 • Fax (760) 369-6758

LEGEND:

A = Adult

CP = Contract Provider

S = School Based Children Services

C = Children

ADS = Alcohol and Drug Services

O = Outpatient

MH = Mental Health Services

P = Prevention

R = Residential

M = Methadone



*"It takes a
whole
village to
raise a
child."*

*African
Proverb*

ALCOHOL AND DRUG SERVICES

Alcohol and Drug Services provides a full range of preventative, outpatient and residential programs through contracted agencies, county agencies and community-based organizations throughout the County of San Bernardino. Individual, group and family counseling are offered on an outpatient basis. Information concerning alcohol detoxification, treatment for chemical dependency and related services may be obtained by contacting ADS Administration.

ALCOHOL AND DRUG SERVICES ADMINISTRATION (ADS)
(909) 421- 4601 • Fax (909) 421- 9466 • TDD 1-800-735-2929

BARSTOW

Mental Health Systems, Inc.
Barstow Counseling Center – A, C, ADS, MH, O,
805 E. Mountain View
Barstow, CA 92311
(760) 256-5026 • Fax (760) 256-5092

BARSTOW

Barstow Recovery Services – ADS, R, A, CP, O, P
305 E. Fredricks Street
Barstow, CA 92311
(760) 256-7313 • Fax (760) 256-3101

BIG BEAR

Morongo Basin Mental Health
Big Bear Recovery Services – ADS, A, C, CP, O, P
Mail: P.O. Box 6070
41945 Big Bear Boulevard, Suite 208
Big Bear Lake, CA 92315
(909) 878-0101 • Fax (909) 878-0105

BLOOMINGTON

Cedar House – MH, ADS, A, R, O, CP
18612 Santa Ana Avenue
Bloomington, CA 92316
(909) 421-7120 • Fax (909) 421-7128

COLTON

Mental Health Systems, Inc. – P, A, C, CP
Central Valley Prevention Programs
850 E. Washington Street, 2nd Floor, Suite 201
Colton, CA 92324
(909) 423-0312 • Fax (909) 423-0231

COLTON

Mental Health Systems, Inc.
Central Valley Regional Recovery Center – O, P, ADS, MH, CP
1076 Santo Antonio, Suite B
Colton, CA 92324
(909) 433-9824 • Fax (909) 433-9830

ALCOHOL AND DRUG SERVICES

COLTON

Western Clinical Health Care Services
Colton Clinical Services – M, O, A, ADS, CP
2275 E. Cooley Drive
Colton, CA 92324
(909) 370-1777 • Fax (909) 370-1776

COLTON

Mental Health Systems, Inc.
Fontana Center for Change – A, O, CP, ADS, MH
1076 Santo Antonio, Suite B
Colton, CA 92324
(909) 433-9824 • Fax (909) 433-9830

COLTON

Supervised Treatment After Release (STAR) – R, A, ADS, MH, O
1330 Cooley Drive
Colton, CA 92324
(909) 423-0750 • Fax (909) 423-0760

HESPERIA

AEGIS-Hesperia Clinic – M, A, ADS, O, CP
11959 Mariposa Road
Hesperia, CA 92345
(760) 956-2462 • Fax (760) 956-7542

JOSHUA TREE

Morongo Basin Mental Health Services Association, Inc.
Panorama Ranch – R, A, ADS, MH, CP
65675 Sullivan Road
Mail: P.O. BOX 335
Joshua Tree, CA 92252
(760) 366-9100 • Fax (760) 366-3663

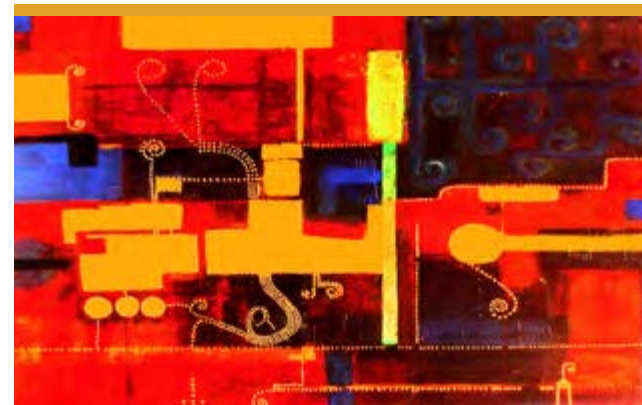
LEGEND:

- A** = Adult
- CP** = Contract Provider
- S** = School Based Children Services
- C** = Children
- ADS** = Alcohol and Drug Services
- O** = Outpatient
- MH** = Mental Health Services
- P** = Prevention
- R** = Residential
- M** = Methadone



"It's not what happens to you, it's what you do about it."

W. Mitchell



ALCOHOL AND DRUG SERVICES

NEEDLES

Mental Health Systems, Inc.
Needles Center for Change – O, A, ADS, CP, MH
 300 "H" Street
 Needles, CA 92363
 (760) 326-4590 • Fax (760) 326-3154

ONTARIO

AEIGS – Ontario Clinic – M, A, ADS, O, CP
 125 W. "F" Street
 Ontario, CA 91762
 (909) 986-4550 • Fax (909) 986-4506

ONTARIO

Bilingual Family Counseling – O, MH, ADS, C, A, CP
 317 W. "F" Street
 Ontario, CA 91762
 (909) 986-7111 • Fax (909) 986-0941

ONTARIO

Ontario Community Counseling – O, A, ADS, MH, CP
 1647 E. Holt Boulevard
 Ontario, CA 91761
 (909) 933-6341 • Fax (909) 933-6355

RANCHO CUCAMONGA

Matrix Drug Court – O, ADS, CP, A
 11777 Sebastian Way, Suite 102
 Rancho Cucamonga, CA 91730
 (909) 466-3795 • Fax (909) 989-0249

RANCHO CUCAMONGA

Matrix Institute – O, ADS, A, CP
 11777 Sebastian Way, Suite 102
 Rancho Cucamonga, CA 91730
 (909) 989- 9724 or (800) 8-Matrix • Fax (909) 989-0249

REDLANDS

Mental Health Systems, Inc.
Redlands Center for Change – A, CP, ADS
 802 Colton Avenue, Suite C
 Redlands, CA 92374
 (909) 335-2989 or (909) 335-7067
 Fax (909) 335-1701

RIALTO

Rialto Behavioral Addiction Treatment Services – O, A, ADS
 850 E. Foothill Boulevard
 Rialto, CA 92376
 (909) 421-9465 • Fax (909) 421-9466



*"My life
 turned around
 when I began
 to believe in
 me."*

*Robert
 Schuller*

ALCOHOL AND DRUG SERVICES

SAN BERNARDINO

Casa de San Bernardino – O, A, ADS, CP
 735 North "D" Street
 San Bernardino, CA 92401
 (909) 381-5507 • Fax (909) 888-5938

SAN BERNARDINO

Inland Behavioral & Health Services, Inc. – O, P, A, C, ADS, CP
 1963 N. "E" Street
 San Bernardino, CA 92405
 (909) 881-6146 • Fax (909) 881-0111

SAN BERNARDINO

New House, Inc. – Women & Men's Recovery Program – R, A, C, ADS, CP
 2130 N. Arrowhead Avenue, Suite 109
 San Bernardino, CA 92405
 * Please call for more information.
 (909) 881-0390 • Fax (909) 881-0391

SAN BERNARDINO

Mental Health Systems, Inc.
Pride Program (for probationers only) – A, ADS, CP
 1874 Business Center Drive
 San Bernardino, CA 92408
 (909) 386-0523 • Fax (909) 386-0529

SAN BERNARDINO

Riverside-San Bernardino County Indian Health, Inc.
MH, ADS, O, CP – Native American Only
 2210 E. Highland Avenue, Suite 200
 San Bernardino, CA 92404
 (909) 864-1097 • (909) 864-2498

SAN BERNARDINO

Mental Health Systems, Inc.
San Bernardino Center for Change – A, CP, ADS
 1874 Business Center Drive
 San Bernardino, CA 92408
 (909) 386-0437 • Fax (909) 386-0529

SAN BERNARDINO

Department of Public Health – P, ADS
 351 N. Mountain View Avenue
 San Bernardino, CA 92415
 (800) 782-4264 • Fax (909) 387-6430

LEGEND:

A = Adult
CP = Contract Provider
S = School Based Children Services
C = Children
ADS = Alcohol and Drug Services
O = Outpatient
MH = Mental Health Services
P = Prevention
R = Residential
M = Methadone

ALCOHOL AND DRUG SERVICES

SAN BERNARDINO

Social Action Community Health Systems – Norton – O, CP, A, C
 1455 E. 3rd Street
 Mail: 1454 E. 2nd Street
 San Bernardino, CA 92408
 (909) 382-7100 or (909) 382-7135
 Fax (909) 382-7166 or (909) 382-7101

SAN BERNARDINO

Veteran's Alcoholic Rehabilitation Program, Inc. (VARP) – R, CP, A, C, ADS
 1173 N. "D" Street
 San Bernardino, CA 92410
 (909) 381-3774 • Fax (909) 381-6845

SKYFOREST

Rim Family Services – O, P, ADS, CP, A, C
 28545 Highway 18
 Mail: P.O. BOX 578
 Skyforest, CA 92385
 (909) 336-1800 • Fax (909) 336-0990

UPLAND

Inland Valley Recovery Services – ADS, CP, A, O, R, P
 916 N. Mountain Avenue, Suite A
 Upland, CA 91786
 (909) 932-1069 • Fax (909) 932-1087

UPLAND

Reach Out, Inc. – P, ADS, CP
 1126 W. Foothill Boulevard, Suite 150
 Upland, CA 91786
 (909) 982-8641 • Fax (909) 982-8642



*"Challenges
 are what
 makes life
 interesting;
 overcoming
 them is what
 makes life
 meaningful."*

*Joshua J.
 Marine*



ALCOHOL AND DRUG SERVICES

VICTORVILLE

St. John of God Health Care Services – O, A, ADS, CP
Hospitality Center
 15534 6th Street
 Victorville, CA 92393
 (760) 952-9192 • Fax (760) 843-7243
 Hotline (888) ADDICT8 (233-4288)

VICTORVILLE

St. John of God Health Care Services – Detox
Women & Men's Treatment Facility – R, A, C, CP, ADS
 13333 Palmdale Road
 Victorville, CA 92392
 (760) 241-4917 • Fax (760) 241-8911

VICTORVILLE

Victor Valley Behavioral Health – O, C, A, ADS
 12625 Hesperia Road
 Victorville, CA 92392
 (760) 955-1777 • Fax (760) 956-2356

VICTORVILLE

Mental Health Systems, Inc.
Victor Valley Center for Change – A, ADS, CP
 15770 Mojave Drive, Suites K-L
 Victorville, CA 92392
 (760) 843-7809 • Fax (760) 843-7810

YUCCA VALLEY

Morongo Basin Mental Health Services Association, Inc.
Morongo Basin Counseling and Recovery – O, P, A, ADS, CP
 55475 Santa Fe Trail
 Yucca Valley, CA 92284
 (760) 365-3022 • Fax (760) 365-3513



LEGEND:

A = Adult
CP = Contract Provider
S = School Based Children
 Services
C = Children
ADS = Alcohol and Drug
 Services
O = Outpatient
MH = Mental Health
 Services
P = Prevention
R = Residential
M = Methadone

CHILDREN & YOUTH COLLABORATIVE SERVICES

The Children's System of Care offers an array of services for seriously, emotionally disturbed children who are not benefiting from traditional mental health services. Services range from crisis intervention to life skills and educational services.

AB 2726 RESIDENTIAL AND COORDINATION UNIT

Children in special education may qualify for mental health services, including residential services. These services, collectively referred to as AB2726, are provided at no cost to parents and managed by the AB2726 Residential and Coordination Unit. Referrals must be made through the school district.

RIALTO

AB 2726 Residential and Coordination Unit – C, MH, S

900 E. Gilbert Street, Cottage 4
San Bernardino, CA 92415
(909) 387-7000 • Fax (909) 387-7611

CHILDREN'S INTENSIVE SERVICES (CIS)

The CIS program seeks to support the family unit, engage the family in treatment and reduce the risk of out-of-home placement, significant school problems, or involvement with the Child Welfare/Juvenile Justice System. Services include coordination with available community and clinic resources when there are additional needs.

CRESTLINE

Family Services Agency – C, MH, O, CP

23406 Crest Forest Drive
Crestline, CA 92325
(909) 338-4689 • Fax (909) 338-8230

FONTANA

Family Services Agency – C, MH, O, CP

7933 N. Sierra Avenue
Fontana, CA 92335
(909) 822-3533 • Fax (909) 822-3050

ONTARIO

Southcoast Child Society – C, MH, O, CP

2920 Inland Empire Boulevard, Suite 105
Ontario, CA 91764
(909) 980-6700 • Fax (909) 980-6003

REDLANDS

East Valley – Children Have All Rights Legal, Emotional and Educational, Inc.

(CHARLEE) – C, MH, O, CP
440 Cajon Street
Redlands, CA 92373
(909) 307-5777 • Fax (909) 307-5776

CHILDREN & YOUTH COLLABORATIVE SERVICES

SAN BERNARDINO

EMQ Children and Family Services – C, CP, MH, O

572 N. Arrowhead Avenue, Suite 100
San Bernardino, CA 92401
(909) 266-2700 • Fax (909) 266-2790

SAN BERNARDINO

Family Services Agency – C, MH, O, CP, S

1669 N. "E" Street
San Bernardino, CA 92405
(909) 886-6737 • (909) 881-3871

SAN BERNARDINO

Victor Community Support Services – C, MH, O, CP, S

1908 S. Business Center Drive
San Bernardino, CA 92408
(909) 890-5930 • (909) 890-5950

VICTORVILLE

Victor Community Support Services – C, MH, O CP, S, P

15095 Amargosa Road, Suite 201
Victorville, CA 92392
(760) 245-4695 • Fax (760) 513-4696

VICTORVILLE

Victor Community Support Services – High Desert TAY C, MH, CP

14360 St. Andrews Drive, Suite 11
Victorville, CA 92395
(760) 243-5417 • Fax (760) 245-5896

HEALTHY HOMES

The Healthy Homes program is a collaboration between the Department of Behavioral Health and the Department of Children Services to ensure early identification of mental health needs of children in foster care. The program targets the needs of children and their care providers to stabilize placements, maximize their functioning in the family, school and community settings, reduce higher levels of care and maintain children in the least restrictive environment. The Healthy Homes program serves as a resource and support to care providers.

SAN BERNARDINO

Healthy Homes – C, MH

900 E. Gilbert Street, Cottage 4
San Bernardino, CA 92415
(909) 387-8607 • Fax (909) 387-7402

LEGEND:

A = Adult

CP = Contract Provider

S = School Based Children
Services

C = Children

ADS = Alcohol and Drug
Services

O = Outpatient

MH = Mental Health
Services

P = Prevention

R = Residential

M = Methadone



*"Mental
illness is
nothing to be
ashamed of,
but stigma and
bias shame us
all."*

Bill Clinton

CHILDREN & YOUTH COLLABORATIVE SERVICES

JUVENILE COURT BEHAVIORAL HEALTH SERVICES (JCBHS)

The JCBHS program expands the review process of the psychotropic medication referral (JV220) for juvenile dependents and wards of the County of San Bernardino.

SAN BERNARDINO

Juvenile Court Behavioral Health Services (JCBHS) – C, MH

900 E. Gilbert Street, Cottage 4
San Bernardino, CA 92415
(909) 387-7406 • Fax (909) 387-7402

SCREENING, ASSESSMENT, REFERRAL AND TREATMENT (SART)

SART services are furnished through Early and Periodic Screening, Diagnosis and Treatment (EPSDT) and Medi-Cal to children ages 0-6 who reside in the County of San Bernardino and have been prenatally exposed to alcohol or other drugs.

APPLE VALLEY

Desert Mountain SELPA Children's Center/ SART – C, MH, O, CP, S

17800 Highway 18
Apple Valley, CA 92307
(760) 242-6336 • Fax (760) 946-0819

ONTARIO

West End Counseling – C, MH, O, CP, A, S

855 N. Euclid Street
Ontario, CA 91762
(909) 983-2020 • Fax (909) 983-6847

SAN BERNARDINO

Victor Community Support Services – C, MH, O, CP, S

1908 S. Business Center Drive
San Bernardino, CA 92408
(909) 890-5930 • Fax (909) 890-5950

YUCCA VALLEY

Morongo Basin Mental Health – C, MH, O, CP

58967 Business Center Drive, Suite C, D & E
Yucca Valley, CA 92284
(760) 369-3130 • Fax (760) 365-2695

CHILDREN & YOUTH COLLABORATIVE SERVICES

SUCCESS FIRST

Success First is an early wraparound program to capture those seriously emotionally disturbed, unserved or underserved children/adolescents ages 0-15. The main goal of Success First is to provide these services by keeping children in the lowest level of care possible.

CRESTLINE

Family Services Agency – C, MH, O, CP

23406 Crestforest Drive
Crestline, CA 92325
(909) 338-4689 • Fax (909) 338-8230

ONTARIO

Pacific Clinics – C, MH, O, CP, S

2990 E. Inland Empire Boulevard, Suite 101
Ontario, CA 91764
(909) 980-3427 • Fax (909) 945-3426

RANCHO CUCAMONGA

Mental Health Systems, Inc. – CP, MH, O, C

9087 Arrow Route, Suite 150
Rancho Cucamonga, CA 91730
(909) 980-2789 • Fax (909) 980-2689

SAN BERNARDINO

EMQ Children and Family Services – C, CP, MH, O

572 N. Arrowhead Avenue, Suite 100
San Bernardino, CA 92401
(909) 266-2700 • Fax (909) 266-2790

SAN BERNARDINO

Victor Community Support Services, Inc. – C, MH, O, CP, S

1908 S. Business Center Drive
San Bernardino, CA 92408
(909) 890-5930 • Fax (909) 890-5950

VICTORVILLE

Victor Community Support Services – C, MH, O, CP

15095 Amargosa Road, Suite 201
Victorville, CA 92392
(760) 245-4695 • Fax (760) 513-4696

YUCCA VALLEY

Morongo Basin Mental Health Services Association, Inc.

Morongo Basin Outpatient – O, P, A, ADS, CP, C

55475 Santa Fe Trail
Yucca Valley, CA 92284
(760) 365-3022 • Fax (760) 365-3513

LEGEND:

A = Adult

CP = Contract Provider

S = School Based Children
Services

C = Children

ADS = Alcohol and Drug
Services

O = Outpatient

MH = Mental Health
Services

P = Prevention

R = Residential

M = Methadone



*"All
progress
happens
because people
dare to be
different"*
Harry Milner

CHILDREN & YOUTH COLLABORATIVE SERVICES

THERAPEUTIC BEHAVIORAL SERVICES (TBS)

An intensive one-on-one short-term outpatient treatment intervention authorized for a specified period of time designed to maintain the child/adolescent's residential placement at the lowest appropriate level by resolving targeted behaviors and achieving short-term treatment goals.

COLTON

Mental Health Systems, Inc. – C, MH, O, CP

1430 E. Cooley Drive, Suite 240
Colton, CA 92324
(909) 433-0445

SAN BERNARDINO

Victor Community Support Services – C, MH, O, CP, S

1908 S. Business Center Drive
San Bernardino, CA 92408
(909) 890-5930 • Fax (909) 890-5950

VICTORVILLE

Victor Community Support Services – C, MH, O, CP, S

15095 Amargosa Road, Suite 201
Victorville, CA 92392
(760) 245-4695 • Fax (760) 513-4696

YUCCA VALLEY

Pacific Clinics – C, MH, O, CP

58945 Business Center Drive, Suite D
Yucca Valley, CA 92284
(760) 228-9657 • Fax (760) 369-6758

TRANSITIONAL AGE YOUTH (TAY)

The "One Stop" Transitional Age Youth Centers will provide integrated services to the un-served, under-served and inappropriately served TAY ages 16-25 who are emotionally disturbed, high users of acute facilities, homeless, have co-occurring disorders, are incarcerated or institutionalized. An array of services will be available to assist TAY in reaching their goal of independence. Services provided will also address employment, education opportunities, housing and community life necessary for wellness and recovery.

RANCHO CUCAMONGA

Rancho TAY Center – C, MH, P

9047 Arrow Route, Suite 170
Rancho Cucamonga, CA 91730
(877) 760-0770 or (909) 466-8696 • Fax (909) 948-0457

CHILDREN & YOUTH COLLABORATIVE SERVICES

SAN BERNARDINO

One Stop TAY Center – C, MH, P

700 E. Gilbert Street, Building 4
San Bernardino, CA 92415
(909) 387-7194 • Fax (909) 387-7100

VICTORVILLE

High Desert TAY – C, MH, P, CP

14360 St. Andrews Drive, Suite 11
Victorville, CA 92395
(760) 243-5417 • Fax (760) 245-5896

YUCCA VALLEY

Morongo TAY Center – C, MH, P

58945 Business Center Drive, Suite D
Yucca Valley, CA 92284
(760) 228-9657 • Fax (760) 369-6758

ADULT PROGRAMS

CALWORKS PROGRAM – A

The Department of Behavioral Health, CalWORKS program, is committed to delivering services to the community to enhance the quality of life. CalWORKS' goal is to assist people 18 years and over in improving their emotional health, and develop the skills necessary to obtain and maintain employment.

CENTRAL VALLEY REGION

RIALTO

850 E. Foothill Boulevard
Rialto, CA 92376
(909) 421-9222 • Fax (909) 421-4624

DESERT - MOUNTAIN REGION

BARSTOW

805 E. Mt. View
Barstow, CA 92311
(760) 256-0001 or (760) 256-5026 • Fax (760) 256-5092

VICTORVILLE

12625 Hesperia Road
Victorville, CA 92395
(760) 245-7598 • Fax (760) 955-2356

EAST VALLEY REGION

SAN BERNARDINO

820 E. Gilbert Street
San Bernardino, CA 92415
(909) 387-7646 • Fax (909) 387-0414

LEGEND:

A = Adult

CP = Contract Provider

S = School Based Children
Services

C = Children

ADS = Alcohol and Drug
Services

O = Outpatient

MH = Mental Health
Services

P = Prevention

R = Residential

M = Methadone



*"If there is no
struggle, there
is no progress."*

Frederick

Douglass

ADULT SYSTEM OF CARE

WESTERN REGION ONTARIO

1647 E. Holt Boulevard
Ontario, CA 91761
(909) 933-6425 • Fax (909) 933-6350

ADULT RESIDENTIAL SERVICES CLINIC

The Adult Residential Services Clinic provides case management services to consumers who are in State Hospitals, State Mental Institutions and Specialized Board and Care Facilities. The purpose of the clinics is to link its consumers to services in the community while assuring that all appropriate benefits are in place.

RIALTO

Adult Residential Services Clinic – R, A, MH
850 E. Foothill Boulevard
Rialto, CA 92376
(909) 421-9475 • Fax (909) 421-9392

CONSERVATORSHIP INVESTIGATION UNIT

When an individual's mental illness creates such grave disability that they are unable to provide for their own care, the law allows for that individual to be placed on a LPS conservatorship and the County's Public Guardian assumes legal responsibility for that person's finances, treatment and placement if needed. The unit evaluates those people who are referred for possible conservatorship and determine whether such a legal step is necessary. Conservatorship investigators provide treatment planning and referrals.

RIALTO

Conservatorship Investigation Unit – A, MH
850 E. Foothill Boulevard
Rialto, CA 92376
(909) 421-9380 • Fax (909) 421-9392

THERAPEUTIC ALLIANCE PROGRAM (TAP)

Therapeutic Alliance Program recognizes the frequency of co-occurring disorders (mental illness and substance abuse) in the population of consumers and has established a 30-bed, 90-day residential treatment program at a contract agency, to address the unique needs of that population.

RIALTO

Therapeutic Alliance Program (TAP) – A, R, CP, ADS, MH
850 E. Foothill Boulevard
Rialto, CA 92376
(909) 421-9425 • Fax (909) 421-9392

ADULT SYSTEM OF CARE

LONG-TERM RESIDENTIAL CARE

The following are all licensed as long-term care skilled nursing facilities that serve the mentally ill:

RIVERSIDE

Vista Pacifica – A, R, MH, CP
3674 Pacific Avenue
Riverside, CA 92509
(951) 682-4833 • Fax (951) 274-2742

SAN BERNARDINO

Shandin Hills Behavior Therapy Center – A, MH, CP, R
4164 N. Fourth Avenue
San Bernardino, CA 92407
(909) 886-6786 • Fax (909) 886-2953

SAN BERNARDINO

Sierra Vista – A, MH, CP, R
3455 E. Highland Avenue
San Bernardino, CA 92346
(909) 862-6454 • Fax (909) 862-6474

CLUBHOUSES

Clubhouses are programs run by consumers or members who have minimal support from staff and offer job training, social activities and education.

BARSTOW

A Place to Be – A
805 E. Mt. View
Barstow, CA 92311
(760) 256-5026 • Fax (760) 256-5092

LUCERNE

Someplace to Go – A
32770 Old Woman Springs Road, #B
Lucerne Valley, CA 92356
(760) 248-6612 Ext. 304 • Fax (760) 248-2790

MORONGO BASIN

Santa Fe Social Club – A
56020 Santa Fe Trail, Suite M
Yucca Valley, CA 92284
(760) 369-4057 • Fax (760) 369-9473

LEGEND:

- A** = Adult
- CP** = Contract Provider
- S** = School Based Children Services
- C** = Children
- ADS** = Alcohol and Drug Services
- O** = Outpatient
- MH** = Mental Health Services
- P** = Prevention
- R** = Residential
- M** = Methadone



*"The best
motivation
always comes
from within."*

*Michael
Johnson*

CLUBHOUSES

REDLANDS

"Our Place" – A

721 Nevada Street, Suite 205
Redlands, CA 92373
(909) 557-2140 • Fax (909) 792-1057

RIALTO

Central Valley FUN Clubhouse – A

1501 S. Riverside Avenue
Rialto, CA 92376
(909) 877-4887 • Fax (909) 877-4898

RIALTO

Pathways to Recovery – A

850 E. Foothill Boulevard
Rialto, CA 92376
(909) 421-9248 • Fax (909) 421-9219

SAN BERNARDINO

Seeking Others Attaining Recovery – (SOAR) – A

820 E. Gilbert Street
San Bernardino, CA 92415
(909) 387-7200 • Fax (909) 387-7717

SAN BERNARDINO

TEAM House – A

201 W. Mill Street
San Bernardino, CA 92408
(909) 386-5000 • Fax (909) 386-5009

TRONA

Harmony Clubhouse – A

82820 Trona Road, Suite A
Trona, CA 93562
(760) 372-4843

UPLAND

Amazing Place – The Upland Social Club – A

934 N. Mountain Avenue, Suite C
Upland, CA 91786
(909) 579-8157 • Fax (909) 579-8149

VICTORVILLE

Victor Valley Clubhouse – A

12625 Hesperia Road, Suite B
Victorville, CA 92392
(760) 955-1777 • Fax (760) 955-2356



*"You can do
anything you
wish to do,
have anything
you wish to
have, be
anything you
wish to be."*

Robert Collier

COMMUNITY CRISIS SERVICES

COMMUNITY CRISIS RESPONSE TEAM (CCRT)

The Community Crisis Response Team is a community-based mobile crisis response program for those experiencing a psychiatric emergency.

EAST VALLEY

Community Crisis Response Team (CCRT) – C, O

850 E. Foothill Boulevard
Rialto, CA 92376
(909) 421-9233 • Fax (909) 421-9494
*Pager number (909) 420-0560 (24 hours a day, 7 days a week)

HIGH DESERT

Community Crisis Response Team (CCRT) – C, O

12625 Hesperia Road
Hesperia, CA 92345
(760) 956-2345 • Fax (760) 956-3761
*Pager number (760) 734-8093 (24 hours a day, 7 days a week)

MORONGO BASIN

Community Crisis Response Team (CCRT) – CP, C, A

Morongo Basin Mental Health Services

55475 Santa Fe Trail
Yucca Valley, CA 92284
(760) 365-6558 (24 hours a day, 7 days a week) • Fax (760) 365-3513

WEST VALLEY

Community Crisis Response Team (CCRT) – C, O

1647 E. Holt Boulevard
Ontario, CA 91761
(909) 458-9628 • Fax (909) 458-9750
*Pager number (909) 535-1316 (24 hours a day, 7 days a week)

*Leave your phone number after the beep and the Crisis Response Team will return your call.

LEGEND:

A = Adult

CP = Contract Provider

S = School Based Children
Services

C = Children

ADS = Alcohol and Drug
Services

O = Outpatient

MH = Mental Health
Services

P = Prevention

R = Residential

M = Methadone



COMMUNITY CRISIS SERVICES

CRISIS WALK-IN CLINICS

The Crisis Walk-In Clinics (CWIC) provide urgent mental health services to residents of the County of San Bernardino. CWIC provides crisis intervention, crisis risk assessments, medications, referrals to county, contract and community resources, education and when necessary evaluations for hospitalization. Consumers will be screened for appropriateness of service and will either be provided referrals or admitted in to CWIC for additional assessment. A consumer may meet the criteria to see a psychiatrist, which will be arranged same day for adults and an appointment will be scheduled for children. CWICs are open 24/7, with the exception of the CWIC in Rialto which operates Monday through Friday 8 a.m. to 10 p.m., and Saturday and Sunday 8 a.m. to 5 p.m.

All CWICs are open on holidays.

RIALTO

Crisis Walk-In Clinic – A, C, MH

850 E. Foothill Boulevard
Rialto, CA 92376
(909) 421-9495 • 7-1-1 for TTY for Users • Fax (909) 421-9494
Hours of Operation: Monday-Friday 8:00 a.m. – 10:00 p.m.
Saturdays and Sundays 8:00 a.m. – 5:00 p.m.

HIGH DESERT

Crisis Walk-In Clinic – A, C, MH

16460 Victor Street
Victorville, CA 92395
(760) 245-8837 • 7-1-1 for TTY Users
Hours of Operation: 24 hours a day, 7 days a week

MORONGO BASIN

Crisis Walk-In Clinic – A, C, MH

55475 Santa Fe Trail (Entrance on Inca Trail)
Yucca Valley, CA 92284
(760) 365-6558 • 7-1-1 for TTY Users
Hours of Operation: 24 hours a day, 7 days a week

PSYCHIATRIC TRIAGE DIVERSION PROGRAM

The Psychiatric Triage Diversion Program provides screening and assessment, crisis services, assistance with placement, transportation and community referrals to outpatient programs from Arrowhead Regional Medical Center (ARMC). Case management goals are to assist consumers in receiving services on an outpatient basis and to help consumers function in the community in the least restrictive environment.

RIALTO

Arrowhead Regional Medical Center – Behavioral Health – A, O, MH

400 N. Pepper Avenue
Colton, CA 92324
(909) 580-2141 • Fax (909) 580-2866

HOMELESS MENTALLY ILL PROGRAM

The Homeless Mentally Ill Program provides basic needs (food, housing, clothing), case management, employment, and outreach services to homeless adults suffering from mental illness and living in the County of San Bernardino.

SAN BERNARDINO

Homeless Program – A

237 W. Mill Street
San Bernardino, CA 92408
(909) 388-4133 or (909) 388-4131 • Fax (909) 388-4190

HOUSING AND EMPLOYMENT SERVICES

Housing Services provide assistance to eligible mentally ill and dual-diagnosed individuals and families throughout the County of San Bernardino. Services include linkage between affordable housing to resources, including job training and placement, healthcare, professional counseling and education.

Employment Services provides employment preparation, on the job training and referrals to the Department of Rehabilitation Counselors for on-going services.

SAN BERNARDINO

Housing and Employment Program – A

820 E. Gilbert Street
San Bernardino, CA 92415
(909) 387-8619 • Fax (909) 386-8578

OLDER ADULT SYSTEM OF CARE

The Older Adult System of Care offers an array of services for adults experiencing mental illness. Services may include, but are not limited to, case management, outpatient care, long-term residential care, housing referrals, crisis intervention, mental health services and alcohol and drug services.

LEGEND:

- A = Adult
- CP = Contract Provider
- S = School Based Children Services
- C = Children
- ADS = Alcohol and Drug Services
- O = Outpatient
- MH = Mental Health Services
- P = Prevention
- R = Residential
- M = Methadone



"The key to success is to keep growing in all areas of life -- mental, emotional, spiritual, as well as physical."

Julius Ewing

OLDER ADULT SYSTEM OF CARE

AGE WISE PROGRAM

The Agewise Program provides mental health treatment and case management outreach for older adults. In addition to clinical staff, trained senior peer counselors facilitate support groups. Referrals and consultation are available to individuals, families and agencies working with the elderly. Services are provided in the West, East and Desert Areas of the County of San Bernardino.

CENTRAL VALLEY

Age Wise Program – A, O, MH

850 E. Foothill Boulevard
Rialto, CA 92376
(800) 451-5633 • Fax (909) 873-4461

HESPERIA

Age Wise Program – Circle of Care – OA, O, MH

11951 Hesperia Road
Hesperia, CA 92345
(800) 451-5633 • Fax (909) 873-4461

ACUTE CARE HOSPITALS

CHINO

Canyon Ridge Hospital – A, C, MH, CP

5353 “G” Street
Chino, CA 91710
(909) 590-3700 • Fax (909) 590-4021

Canyon Ridge is a 59-bed psychiatric hospital and accepts pediatric, adolescent, adult and geriatric patients.

COLTON

Arrowhead Regional Medical Center – Behavioral Health Unit – A, C, MH, CP

400 N. Pepper Avenue
Colton, CA 92324
(909) 580-1800

ARMC has 60 adult psychiatric beds. The 24-hour psychiatric triage unit can be reached at (909) 580-2814.

LOMA LINDA

Loma Linda University Behavioral Medicine Center (LLBMC) – A, C, MH, CP

1710 Barton Road
Redlands, CA 92373
(909) 558-9200 • (909) 558-9269

LLBMC is an 89-bed psychiatric hospital. 29 beds are for children, 18 are for adults, 24 are for adult/senior patients and 18 are for chemical dependency.

ACUTE CARE HOSPITALS

REDLANDS

Redlands Community Hospital – A, C, MH, CP

350 Terracina Boulevard
Redlands, CA 92373
(909) 335-5500 • Fax 335-5650

There are 17 beds for adult and older adult patients.

SAN BERNARDINO

Community Hospital of San Bernardino (CHSB) – A, C, MH, CP

1805 Medical Center Drive
San Bernardino, CA 92411
(909) 887-6333

CHSB has 27 beds for adult and adolescent patients.

FORENSIC SERVICES

CRISIS INTERVENTION TEAM (CIT)

The CIT Program is a community partnership that provides mental health education for law enforcement within the context of safety and empathy to ensure a seamless link between a mental illness-related crisis event in the community, law enforcement, Department of Behavioral Health and eventual community treatment.

COLTON

Crisis Intervention Team (CIT) – A, C, P, MH

1950 S. Sunwest Lane, Suite 200
San Bernardino, CA 92415
(909) 252-4066 • Fax (909) 252-4055

CONDITIONAL RELEASE PROGRAM (CONREP)

CONREP is a community treatment and supervision program that provides the following services to its participants: individual and group therapy, day treatment activities, home visits, collateral contacts (i.e. family, friends, sponsors and others in the community), and screenings for drug and alcohol use. CONREP participants are either PC 1370 – Incompetent to Stand Trial (IST), PC 1026 – Not Guilty By Insanity (NGI), or PC 2962/2972 – Mentally Disordered Offender. CONREP also administers IST evaluations to incarcerated individuals both within the counties of Riverside and San Bernardino. CONREP provides participants an opportunity to continue to receive mental health treatment and learn to live in the local community. In addition CONREP also seeks to provide safety and protection to the community by providing close supervision of its participants.

COLTON

Conditional Release Program (CONREP) – MH, A, ADS

1330 Cooley Drive
Colton, CA 92324
(909) 423-0750 • Fax (909) 423-0760

LEGEND:

A = Adult

CP = Contract Provider

S = School Based Children
Services

C = Children

ADS = Alcohol and Drug
Services

O = Outpatient

MH = Mental Health
Services

P = Prevention

R = Residential

M = Methadone



*“Nothing is
impossible to a
willing heart.”*

*Robert
Schuller*

FORENSIC SERVICES

JAIL MENTAL HEALTH SERVICES (JMHS)

Jail Mental Health Services (JMHS) provides mental health services to San Bernardino County and Federal inmates who are housed in county detention facilities including West Valley Detention Center (WVDC), Glen Helen Rehabilitation Center (GHRC), Adelanto Detention Center (ADC), and Central Detention Center (CDC). Staff's primary goal is to alleviate the suffering of persons with serious mental illness, to prevent a worsening of symptoms while incarcerated and to prevent hospitalization.

ADELANTO

Adelanto Detention Center – Jail Mental Health Services (JMHS)

– A, MH

9438 Commerce Way

Adelanto, CA 92301

(760) 530-9365 • Fax (760) 530-9367

DEVORE

Glen Helen Rehabilitation Center – Jail Mental Health Services

(JMHS) – A, MH

18000 Institution Road

Devore, CA 92407

(909) 473-2616 • Fax (909) 473-2643

RANCHO CUCAMONGA

West Valley Detention Center (WVDC) – Jail Mental Health Services (JMHS) – A, MH

9500 Etiwanda Avenue

Rancho Cucamonga, CA 91739

(909) 463-5234 • Fax (909) 463-5233

SAN BERNARDINO

Central Detention Center (CDC) – Jail Mental Health Services (JMHS) – A, MH

630 East Rialto Road

San Bernardino, CA 92415-0025

(909) 386-0904 • Fax (909) 386-0939



*"Nothing is
too high for
a man to
reach, but he
must climb
with care and
confidence."*

Hans

Christian

Andersen

FORENSIC SERVICES

SUPERVISED TREATMENT AFTER RELEASE (STAR)

Supervised Treatment After Release is a court-referred co-occurring mental health and substance abuse treatment program for clients with serious and persistent mental illness who have had repeated contact with the criminal justice system. Clients suitable for STAR participate in this program as a condition of their probation through Mental Health Court. Services include residential or outpatient substance abuse treatment, full day mental health rehabilitation, and outpatient mental health services including intensive case management and psychiatric services. Clients in STAR are under the Court's supervision. At present the STAR Program works with four Mental Health Court jurisdictions: San Bernardino, Rancho Cucamonga, Victorville and Barstow.

COLTON

Supervised Treatment After Release (STAR) – R, A, MH, ADS, O

1330 Cooley Drive

Colton, CA 92324

(909) 423-0750 • Fax (909) 423-0760

JUVENILE JUSTICE PROGRAMS

The Juvenile Justice Program is a collaboration of the Probation Department and the Department of Behavioral Health. It is a team entrusted by the public to provide quality mental health services to juveniles in the justice system and to their families in an effort to reduce recidivism and enhance the quality of their lives. Juvenile Justice Program services are only available to minors involved in the County of San Bernardino juvenile justice system who are referred to the program through the Probation Department and Juvenile Court system.

JUVENILE JUSTICE PROGRAM ADMINISTRATION – C, MH

700 E. Gilbert Street, Building 4

San Bernardino, CA 92415

(909) 387-7792 • Fax (909) 387-7386

COURT FOR THE INDIVIDUALIZED TREATMENT OF ADOLESCENTS (CITA)

Minors in the juvenile justice system who have been identified with a significant mental illness are referred to CITA for court-ordered treatment. The minors are linked with outpatient psychotherapy and psychiatric care. Additionally, the minors receive close supervision by the Probation Department, as well as court oversight. The program requires active parental involvement.

Central Valley Juvenile Detention and Assessment Center – C, MH

900 E. Gilbert Street

San Bernardino, CA 92415

(909) 387-7118

LEGEND:

A = Adult

CP = Contract Provider

S = School Based Children
Services

C = Children

ADS = Alcohol and Drug
Services

O = Outpatient

MH = Mental Health
Services

P = Prevention

R = Residential

M = Methadone

JUVENILE JUSTICE PROGRAMS

FORENSIC ADOLESCENT SERVICES TEAM (FAST)

FAST was created to serve the mental health needs of minors who are detained in a San Bernardino County Juvenile Detention and Assessment Center (JDAC) or housed at a Probation treatment facility. Most minors experience at least some level of emotional distress and anxiety regarding being arrested and detained. These minors include those with transitional mental and emotional issues, as well as those with severe mental illness. There are Alcohol and Drug counselors to provide in-custody minors with substance abuse education services. FAST also assists in the training of Probation's custody and supervisory staff to ensure effective interventions with minors.

Central Valley Juvenile Detention and Assessment Center (JDAC) – C, MH

900 E. Gilbert Street
San Bernardino, CA 92415
(909) 387-7118

High Desert Juvenile Detention and Assessment Center (JDAC) – C, MH

21101 Dale Evans Parkway
Apple Valley, CA 92307
(760) 961-6730

GATEWAY PROGRAM

In 2007, Senate Bill (SB) 81 shifted responsibility for certain offenders committed for non-violent offenses from the state to counties. The San Bernardino County Probation Department, in collaboration with the Department of Behavioral Health and other county agencies, developed the Gateway Program, a residential program which utilizes evidence-based assessments, treatments and evaluations aimed at reducing recidivism. Adjunct services include medication support, mental health assessments, individual and family treatment, as well as, alcohol and drug counseling.

Gateway Program Regional Youth Educational Facility – C, MH

740 E. Gilbert Street
San Bernardino, CA 92415
(909) 387-6933

Gateway Program Central Valley Juvenile Detention and Assessment Center (JDAC) – C, MH

900 E. Gilbert Street
San Bernardino, CA 92415
(909) 387-7118

JUVENILE JUSTICE PROGRAMS

INTEGRATED NEW FAMILY OPPORTUNITIES (INFO)

This NACo (National Association of Counties) award-winning program was created in January 2007 to serve minors coming out of the Central Valley JDAC. INFO uses evidence-based models for reducing the involvement of mentally ill minors in the juvenile justice system. Services include functional family therapy, intensive supervision by the Probation Department, 24/7 case management and support and peer counseling.

Central Valley Juvenile Detention and Assessment Center (JDAC) – C, MH

900 E. Gilbert Street
San Bernardino, CA 92415
(909) 387-7118

REINTEGRATION

Minors who have been identified with behavioral health issues who are detained in a San Bernardino County JDAC and will be returning to the community are referred for Reintegration services. While the minor is still detained, the family and minor are consulted regarding the minor's history, strengths and needs as well as the family's special circumstances. Aftercare programs are sought to support the minor's smooth transition into the community. Individual case planning, home visits and referrals are essential components of the program and include academics, vocational skills, job related skills, legal resources and information.

Central Valley Juvenile Detention and Assessment Center (JDAC) – C, MH

900 E. Gilbert Street
San Bernardino, CA 92415
(909) 387-7118

High Desert Juvenile Detention and Assessment Center (JDAC) – C, MH

21101 Dale Evans Parkway
Apple Valley, CA 92307
(760) 961-6730

LEGEND:

- A** = Adult
- CP** = Contract Provider
- S** = School Based Children Services
- C** = Children
- ADS** = Alcohol and Drug Services
- O** = Outpatient
- MH** = Mental Health Services
- P** = Prevention
- R** = Residential
- M** = Methadone



*"Everything
has beauty,
but not
everyone sees
it."*

Confucius

NOTES

[illegible]

**COUNTY OF SAN BERNARDINO
DEPARTMENT OF BEHAVIORAL HEALTH**



**ACCESS UNIT 24HR.
CRISIS & REFERRAL
HOTLINES**

(909) 381 - 2420
1 (888) 743 - 1478
TDD 1 (888) 743 - 1481

2-1-1 is a toll-free phone number that provides information and referrals for health and social services in the local community.

2-1-1 is free and confidential, and a live, bilingual call specialist assists callers 24 hours a day.

Hundreds of community services are available by simply dialing 2-1-1 (or 888-435-7565).